

Single Slot Serial/USB Cradle

Connection to a PC via USB.

Device USB port is USB2.0.

Content is a copy out of Zebra Integrator Guide.

Available on:

BARTEC support download page.

<http://automation.bartec.de/mobileE.htm>

- Mobile Computing
- MC92N0ex series
- Manuals

Zebra support download page:

<https://www.zebra.com/us/en/support-downloads/mobile-computers/handheld/mc9200.html>

- Manuals

Single Slot Serial/USB Cradle



CAUTION Ensure that you follow the guidelines for battery safety described in [Battery Safety Guidelines on page 12-1](#).

This section describes how to set up and use a single Single Slot Serial/USB cradle with the MC92N0-G. For USB communication setup procedures see [Serial Communication Setup on page 2-30](#).

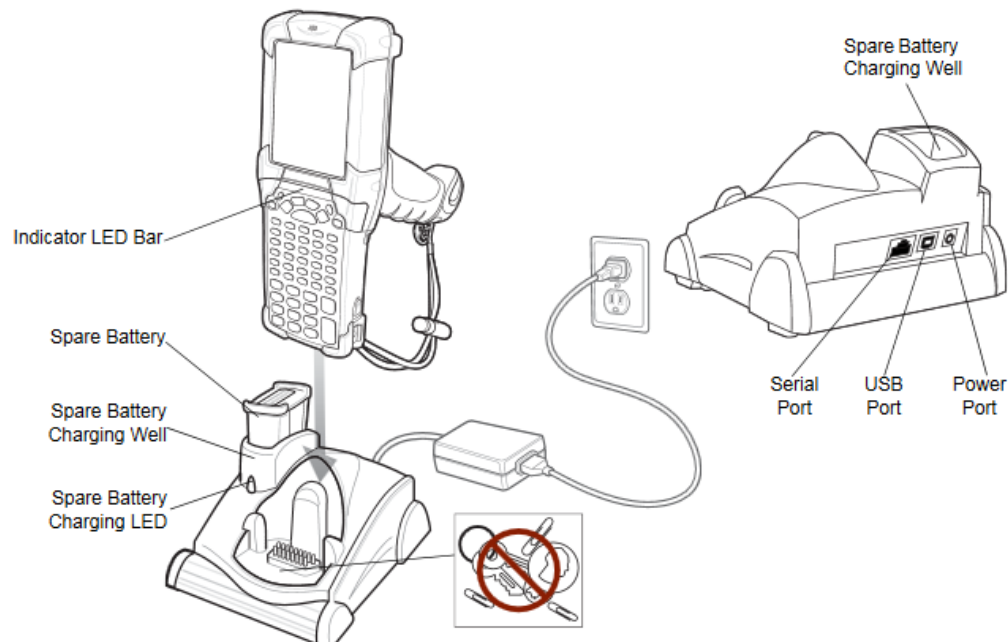


Figure 2-4 Single Slot Serial/USB Cradle



CAUTION Do not place coins, keys or paper clips in cradle well.

The Single Slot Serial/USB Cradle:

- Provides 15VDC power for operating the MC92N0-G.
- Provides USB ports for data communication between the MC92N0-G and a host computer or other devices (e.g., a printer).



NOTE When an MC92N0-G with Windows Embedded Handheld is placed in the cradle and an ActiveSync connection is made, the WLAN radio is disabled. This is a Microsoft security feature to prevent connection to two networks at the same time.

- Synchronizes information between the MC92N0-G and a host computer. (With customized or third party software, it can also be used to synchronize the MC92N0-G with corporate databases.)
- Charges the MC92N0-G's battery.

- Charges a spare battery.

Setup

✓ **NOTE** Only USB is supported with the MC92N0-G.

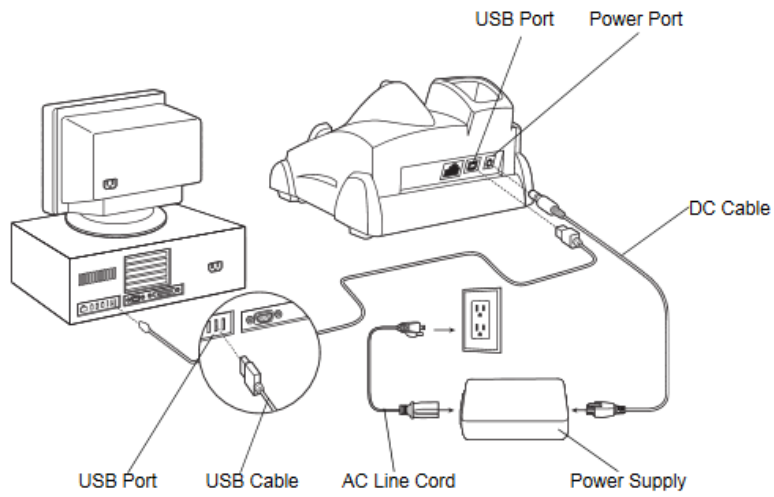


Figure 2-5 Single Slot Cradle Power/USB Connections

Serial Communication Setup

✓ **NOTE** Windows devices only.

The serial communications setup can be used to set up to communicate with a Single Slot Serial/USB Cradle, MSR or a CAM.

✓ **NOTE** For serial communication using accessories that can communicate with either a serial or USB connection, connect only the serial cable. Do not connect both the serial and USB cables. If both serial and USB communication cables are required, the host computer's USB port must be disabled in ActiveSync before serial communication can be enabled.

Setting Up a Connection on the MC92N0-G (Windows Embedded Handheld)

1. On the MC92N0-G tap **Start > ActiveSync**.
2. Tap **Menu > Connections**.
3. Select the **Synchronize all PCs using this connection** check box.
4. Select the connection (e.g., Bluetooth or USB) for synchronization from the drop-down list. The default connection for synchronization is **USB**.
5. Tap **OK**.
6. Ensure that synchronization software is installed on the host computer and a partnership was created.
7. Select **Start > All Programs > Microsoft ActiveSync** or **Windows Mobile Device Center** on the host computer, if it is not already running.

✓ **NOTE** Every MC92N0-G should have a unique device name. Never try to synchronize more than one MC92N0-G to the same name.

8. In the synchronization window, select **File > Connection Settings**.

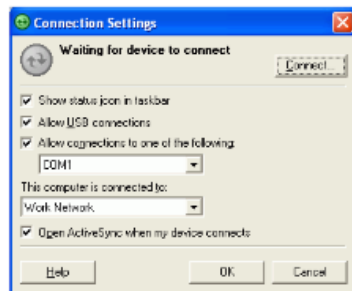


Figure 2-25 Connection Settings Window

9. In the **Connection Settings** window, select the appropriate check box for the type of connection being used. If using a serial connection, select the COM port from the drop-down list.

✓ **NOTE** If serial, USB and Ethernet communication connections are used, all check boxes can be selected to avoid having to update this window for different connections.

10. Tap **OK** to save any changes made.
11. Ensure the accessory being used to communicate is connected to the host computer and the appropriate power source.

✓ **NOTE** The accessory requires a dedicated port. It cannot share a port with any other device. Refer to the host computer user manual supplied to locate the USB ports.

12. Connect the MC92N0-G to the accessory being used for communication.
13. Power on the MC92N0-G.
14. If a partnership was already created between the host computer and MC92N0-G, synchronization occurs automatically upon connection.

Serial Connection Setup (Windows CE)

1. On the MC92N0-G tap **Start > Settings > Control Panel > PC Connection** icon.
2. Tap **Change Connection...**
3. Select the serial communication type from the drop-down list.
4. Tap **OK**.
5. Tap **OK**.
6. Ensure that synchronization software was installed on the host computer and a partnership was created.
7. Start **ActiveSync** or **Windows Mobile Device Center** if it is not running on the host computer. To start, select **Start > Programs > Microsoft ActiveSync**.

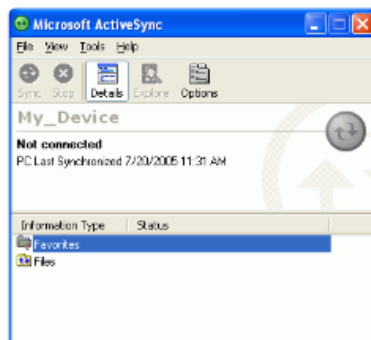


Figure 2-26 ActiveSync - Not Connected

8. In the **ActiveSync** window, select **File > Connection Settings**. The **Connection Settings** window displays.

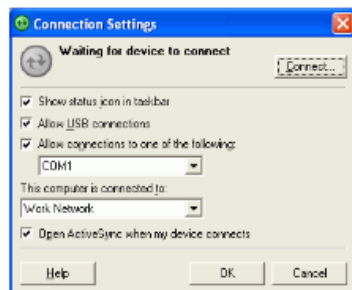


Figure 2-27 Connection Settings

9. For a serial connection, select **Allow connections to one of the following:** check box and select the comm port from the drop-down list.
10. For USB connection, select **Allow USB connection** check box.
11. Tap **OK** to save any changes made.

✓ **NOTE** Every MC92N0-G should have a unique device name. Never try to synchronize more than one MC92N0-G to the same name.

12. Connect the device to the host computer.

✓ **NOTE** The cradle requires a dedicated port. It cannot share a port with an internal modem or other device. Refer to the computer user manual supplied to locate the serial port(s).


13. Upon connection, synchronization occurs automatically.

USB Host Communication Setup

✓ **NOTE** USB Host mode is only available on Windows Mobile devices.


The MC92N0-G can be configured as a USB host device for use with USB client devices.

To configure the MC92N0-G as a USB host:

1. On Windows Embedded Handheld devices, tap **Start > Settings > System > USBConfig**.
On Windows CE devices, tap **Start > Settings > Control Panel > USB Config**.
On Android devices, touch  > USBConfig.
2. Tap the **USB Host Mode** radio button.
3. Tap **OK**.

✓ **NOTE** When the MC92N0-G is configured as a USB host, it cannot ActiveSync with a host computer.

To configure the MC92N0-G as a USB client:

1. On Windows Embedded Handheld devices, tap **Start > Settings > System > USBConfig**.
On Windows CE devices, tap **Start > Settings > Control Panel > USB Config**.
On Android devices, touch  > USBConfig.
2. Tap the **USB Client Mode** radio button.
3. Tap **OK**.
4. Remove the MC92N0-G from the cradle or CAM.
5. Re-insert the MC92N0-G into a cradle or re-connect the CAM.

Setting Up a Sync Connection

ActiveSync

1. Select **Start > Programs > Microsoft ActiveSync** on the host computer. The **ActiveSync Window** Displays.

Synchronization 3 - 3

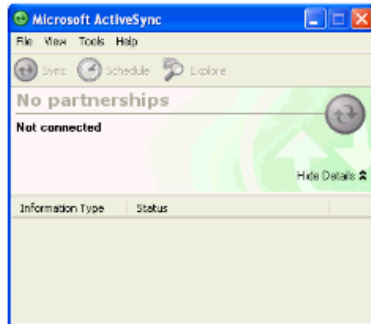


Figure 3-2 ActiveSync Window



NOTE Assign each MC92N0-G a unique device name. Do not try to synchronize more than one MC92N0-G to the same name.

2. In the **ActiveSync** window, select **File > Connection Settings**. The **Connection Settings** window appears.

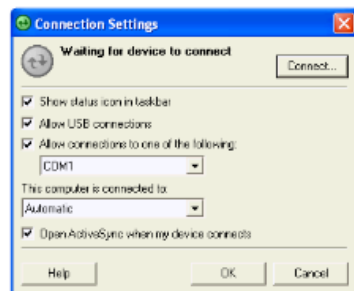


Figure 3-3 Connection Settings Window

3. Select **Allow USB connections** check box.
4. Select the **Show status icon in taskbar** check box.
5. Select **OK** to save any changes made.

Windows Mobile Device Center

1. Select **Start > All Programs > Windows Mobile Device Center** on the host computer.



Figure 3-4

Figure 3-5 *Windows Mobile Device Center Window*

2. In the WMDC window, under **Mobile Device Settings**, click **Connection settings**.

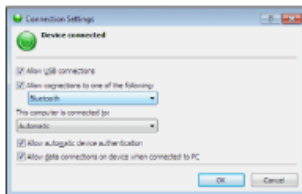
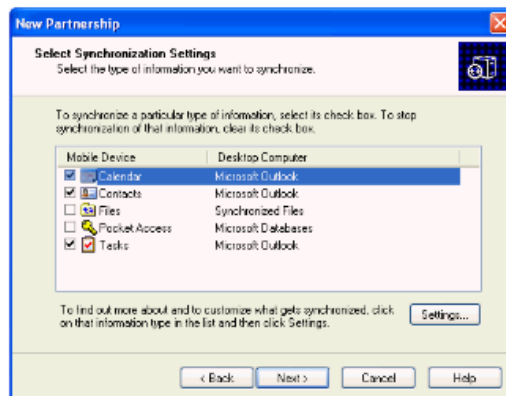


Figure 3-6 *Connection Settings Window*

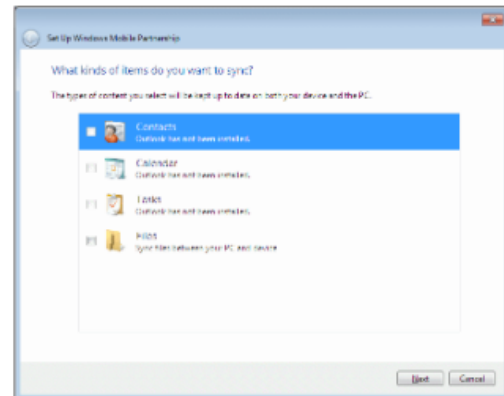
3. Select **Allow USB connections** and adjust any additional settings as needed.
4. Click **OK** to save your settings.

Setting up a Partnership with a Windows CE Device

1. If the **Get Connected** window does not appear on the host computer, select **Start > All Programs > Microsoft ActiveSync**.
2. Select if you want to create synchronize with the host computer or to connect as a guest.
3. Click **Next**.



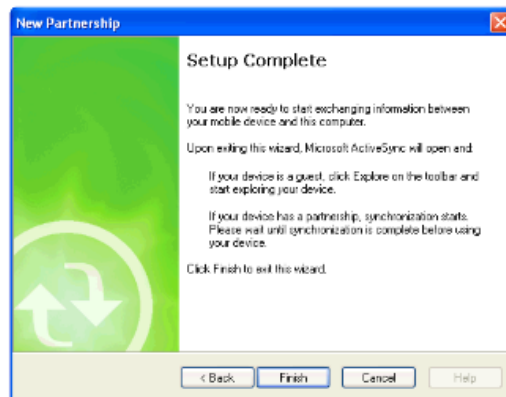
ActiveSync



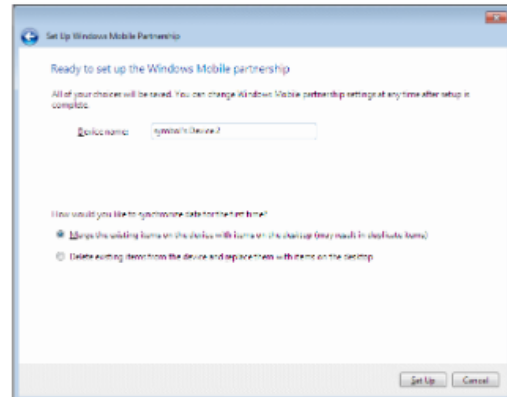
WMDC

Figure 3-7 Select Synchronization Setting Window

4. Select the appropriate settings and click **Next**.



ActiveSync



WMDC

Figure 3-8 Setup Complete Window

5. Click **Finish** or **Setup**.

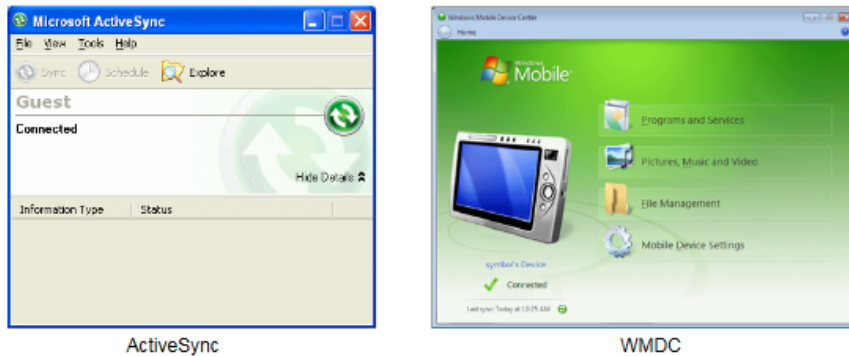


Figure 3-9 Connected Window

During the first synchronization, information stored on the MC92N0-G is copied to the host computer. When the copy is complete and all data is synchronized, the MC92N0-G can be disconnected from the host computer.

- ✓ **NOTE** The first synchronization operation must be performed with a local direct connection. To retain partnerships after a cold boot, capture partnership registry information in a .reg file and save it in the Flash File System, detailed information is provided in the EMDK Windows CE Help File for the Zebra MC92N0-G.

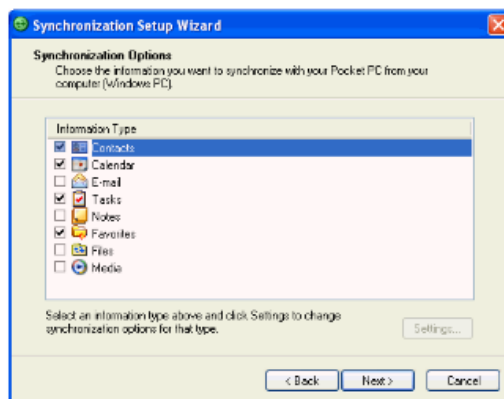
For more information about using ActiveSync or WMDC, start the application on the host computer, then see Help.

Synchronization With a Windows Embedded Handheld Device

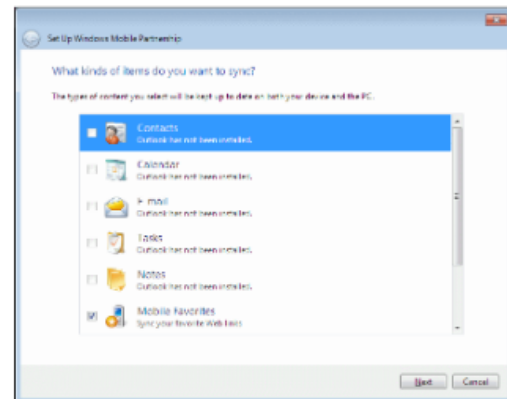
- ✓ **NOTE** When the MC92N0-G is connected to your computer and a sync connection is made, the Wi-Fi radio (if applicable) is disabled. This is a Microsoft security feature to prevent connection to two networks at the same time.

To synchronize with the MC92N0-G:

1. Connect the MC92N0-G to your computer using the provided USB cable.
2. If the **Get Connected** window does not appear on your computer, select **Start > All Programs > Microsoft ActiveSync** or **Windows Mobile Device Center**.
3. Click **Next**.
4. Select the check box to synchronize with a server running Microsoft Exchange if applicable.
5. Click **Next**.



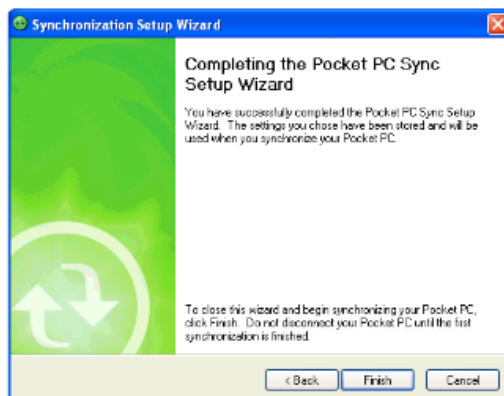
ActiveSync



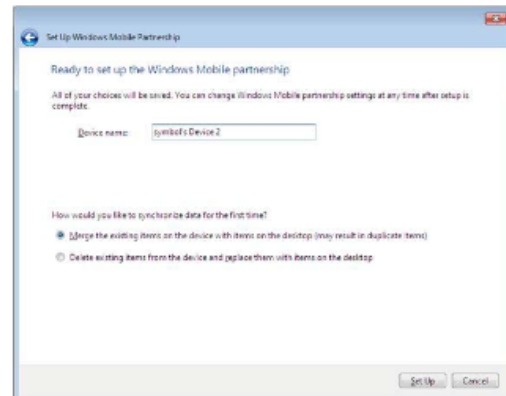
WMDC

Figure 3-10 Select Synchronization Settings

6. Select the appropriate settings and click **Next**.



ActiveSync



WMDC

Figure 3-11 Setup Complete Window

7. Click **Finish** or **Set Up**.

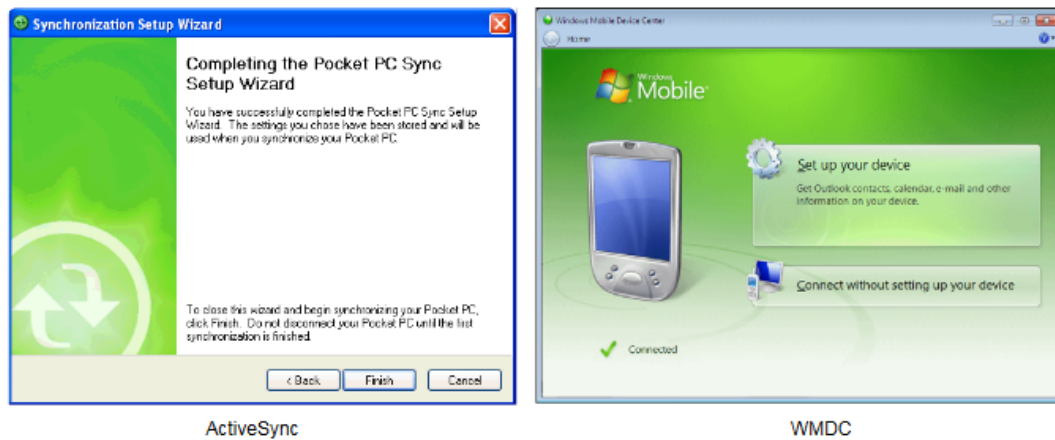


Figure 3-12 *Connected Window*

During the first synchronization, information stored on the MC92N0-G is copied to the host computer. When the copy is complete and all data is synchronized, the MC92N0-G can be disconnected from the host computer.

✓ **NOTE** The first synchronization operation must be performed with a local direct connection. Windows Mobile retains partnerships information after a cold boot.

CHAPTER 4 USB COMMUNICATION

✓ **NOTE** Android devices only.

This chapter provides information for transferring files between the device and a host computer.

Connecting to a Host Computer via USB

Connect the MC92N0-G to a host computer using the Single Slot Serial/USB Cradle and USB cable or the CAM and USB cable to transfer files between the MC92N0-G and the host computer.



CAUTION When connecting the MC92N0-G to a host computer, follow the host computer's instructions for connecting and disconnecting USB devices, to avoid damaging or corrupting files.

Connecting to the MC92N0-G as a Media Device

✓ **NOTE** Using Media Device, you can copy files to the internal memory.

1. Connect the USB cable to the Single Slot USB Cradle or the CAM. See [Chapter 2, Accessories](#).
2. Place the MC92N0-G into the cradle or connect the CAM to the MC92N0-G.
Connected as a media device appears on the Status bar.
3. On the host computer, open a file explorer application.
4. Locate the **MC92N0** as a portable device.
5. Open the **Internal Storage** or **SD card** folder.
6. Copy or delete files as required.

Disconnect from the Host Computer



CAUTION Carefully follow the host computer's instructions to unmount the device and disconnect USB devices correctly to avoid losing information.

1. On the host computer, unmount the device.
2. Remove the MC92N0-G from the Single Slot Serial/USB Cradle or CAM.