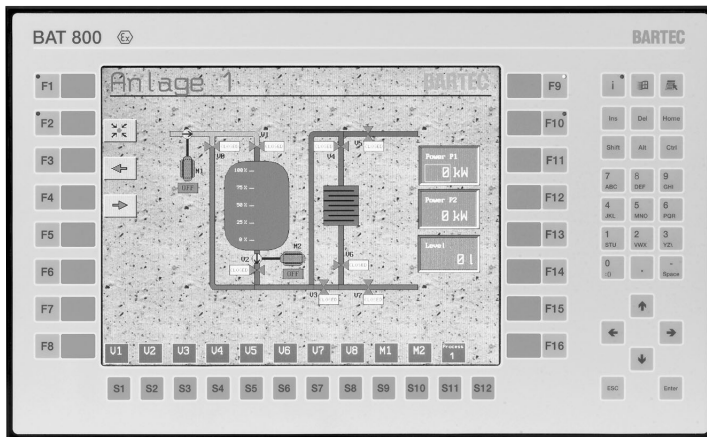


Graphic display

Graphic display **BAT 800**



Graphic display BAT 800



Features

- 12" graphic-capable TFT colour display
- direct linkage in explosive areas
- modular interface technology

Description

The graphic display BAT 800 is an extension of the tried-and-tested BAT family. For the display, state-of-the-art TFT-technology is used with an extremely high view angle. The achieved brightness of 300 cd/m² in Ex-applications is a unique feature.

With the BAT 800, process visualizations can be directly connected in explosive areas without the need for additional intrinsically safe isolation cards. The laying of blue lines for intrinsically safe circuits is dropped. A separate wiring of the data line is not necessary. The graphic display can be directly connected to the PROFIBUS-DP or the communication interface of the PLC.

Thanks to the modular interface technology, the graphic display connections can be individually matched to the respective requirements. Available are, for example, TTY, RS422/485, PROFIBUS-DP, supply module for hand-held scanners.

Visualizations are created by means of the BMS Graf pro programming package, which has been especially developed and optimized for the BAT family.

Selection chart			
Version	Interface configuration	Code no.	
BAT 800	TTY	2	2
	RS232	3	3
	RS422/485	4	4
	supply module for hand-held scanner	-	6
	PROFIBUS-DP	-	7

Complete order no. 17-71PF-12

Please insert correct code.

Technical data

Display

- 262.144 colours, 65536 used by BMS Graf pro
- SVGA resolution 800 x 600 pixel
- Brightness 300 cd/m²
- Visible surface approx. 247.5 x 186.0 mm
- Diagonal 12"

Keyboard

- expanded 10 block
- 12 special keys
- 16 function keys able to be labelled

Memory

For several 100 images

Interfaces

- Optional Ethernet 10BaseT
- COM 1 RS232
- COM 2 RS232

Optional interface modules

- TTY
- RS422/485
- PROFIBUS-DP
- supply module for hand-held scanner

Illumination

CFL illumination, able to be replaced separately

Dimensions

440 mm x 270 mm x 170 mm

Wall cut-out

425 mm x 255 mm + 0.5 mm

Weight

approx. 11 kg

Power supply

DC 24 V/1 A

Admissible ambient temperatures

Storage -20 °C to +50 °C
Operation 0 °C to +50 °C

Explosion protection

Ex protection type

- Ex II 2G EEx me [ib] IIC T4
- Ex II 2D T 80 °C IP 6X

Certification

IBEXU 03 ATEX 1096 X

Protection class

IP 65 (front side)

03-0330-0365-01/04-BMS-D22256E