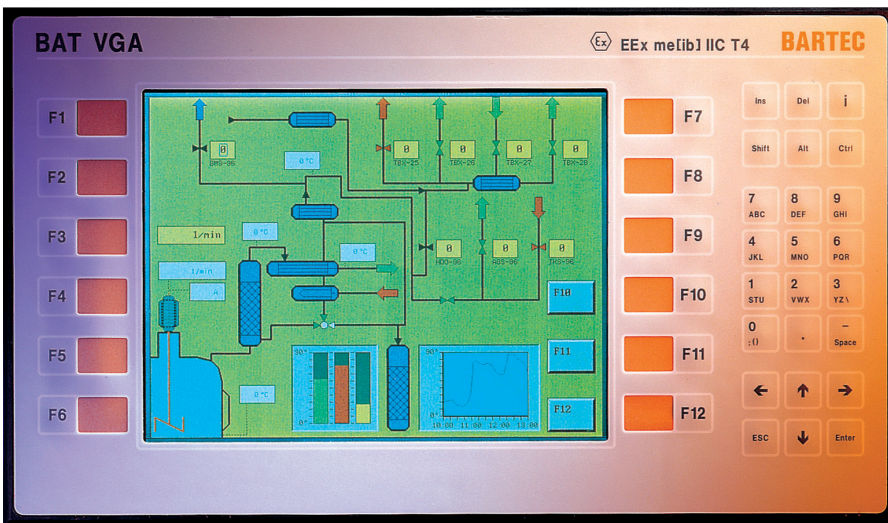




Display terminal BAT VGA pro



Features

- 10.4" Graphic-capable TFT colour display
- Direct linkage in explosive areas
- Optional stainless steel front (BAT VGA pro)
- Modular interface technology

Description

The BAT VGA pro display terminal is an extension to the proven family of BAT terminals. The latest TFT technology has been deployed for the screen, allowing the display to be read from acute angles. A unique brightness of 220 cd/m² in explosive zones has also been achieved.

The BAT VGA pro makes it possible to provide process visualisation directly within explosive environments without the need of extra intrinsically safe separator cards. With the use of the BAT VGA pro's technology the PROFIBUS DP or serial communication interface of the PLC system can be connected directly to the terminals of the display. It is not necessary to lay blue cables for intrinsically safe circuits and separate cabling for the data lines is not required.

Thanks to the new modular interfaces the terminal connections can be adapted to your requirements. These include TTY, RS422/485, PROFIBUS DP and intrinsically safe for hand held scanner input.

The visual images are created with the BMS Graf pro programming package which has been specially developed and optimised for the BAT family of products.

Selection chart				
Interface configuration	Code no.		Version	Code no.
TTY	2	2	Standard	-
RS232	3	3		
RS422/485	4	4	Stainless steel	01
intrinsically safe for hand held scanner	-	6		
PROFIBUS DP	-	7	DustEx	02

Complete order no.

17-71P8-11 [] [] / [] [] xx

Please enter code number.

Technical data

Display

- 262,144 colours, 16 to 65536 used by BMS Graf pro
- VGA-resolution 640 x 480 pixels
- Brightness 220 cd/m²
- Visible area approx. 212 x 159 mm
- Diagonal 10.4"

Keyboard

Expanded 10 block and 12 function keys able to be labelled

Memory

For several 100 images

Interfaces

- Optional Ethernet 10BaseT
- COM 1 RS232
- COM 2 RS232

Optional interface modules

TTY, RS422/RS485, PROFIBUS DP, intrinsically safe for hand held scanner

Illumination

CFL illumination, able to be replaced separately

Dimensions

400 mm x 240 mm x 158 mm

Wall cut-out

386 mm x 226 mm + 0.5 mm

Weight

approx. 8 kg

Power supply

DC 24 V/1 A

Cable length

dependent on the cross-section of the supply cable at 24 V
 approx. 50 m at 0.75 mm²
 approx. 170 m at 2.5 mm²

Admissible ambient temperatures

Storage -20 °C to +50 °C
 Operation 0 °C to +50 °C

Explosion protection

Ex protection type

Ex II 2G/D EEx me [ib] IIC T4 IP66 T80°C

Certification

PTB 01 ATEX 2109

Protection class

IP 65 (front side)

Protection class of overall installation

at least IP 20