

**Supplementary description for user manual 11-A1S4-7D0001
Translation of the original**

Hand-held scanner BCS 36x8^{ex} series

Type 17-A1S4-*HP*

ATEX / IECEx Zone 1/21

CSA Class I, II, III Division 1

Type B7-A2S4-*HP*

ATEX / IECEx Zone 2/22

CSA Class I, II, III Division 2

Date: 14 May 2019

Disclaimer: We reserve the right to make technical changes. Changes, errors and misprints shall not justify any claim for damages.

Table of contents

Table of contents.....	2
1. General about Firmware.....	3
2. 123 Scan Utility	4
3. Required Equipment	5
4. Perform Firmware Update	9

1. General about Firmware

The hand-held scanner BCS 36x8^{ex} series has an associated firmware.

The firmware used by BARTEC is original from Zebra (manufacturer of the non Ex version) and is not modified by BARTEC.

The firmware can be read and updated via the Zebra 123 Scan Utility.

There are two different firmware versions.

- corded version of the BCS 3608^{ex} series
- Bluetooth version of the BCS 3678^{ex} series

List of Firmware versions: (Status 10th May 2019)

BCS 3608 ^{ex} series	BCS 3678 ^{ex} series
<p>Actual version: Status on 10th May 2019</p> <p><input checked="" type="radio"/> Release 019 - 2019.02.07 (CAACJS00-006-R00) (currently installed)</p>	<p>Actual version: Status on 10th May 2019</p> <p><input checked="" type="radio"/> Release 021 - 2019.02.15 (SAACKS00-006-R00) (currently installed)</p>
<p>Older Version:</p> <p>Use older version of firmware (not recommended)</p> <p><input type="radio"/> Release 018 - 2018.05.01 (CAACJS00-005-R00)</p> <p><input type="radio"/> Release 011 - 2017.11.07 (CAACJS00-004-R03)</p> <p><input type="radio"/> Release 007 - 2016.07.27 (CAACJS00-002-R01)</p>	<p>Older Version:</p> <p>Use older version of firmware (not recommended)</p> <p><input type="radio"/> Release 020 - 2018.08.06 (SAACKS00-005-R00)</p> <p><input type="radio"/> Release 004 - 2018.05.17 (SAACKS00-004-R02)</p> <p><input type="radio"/> Release 002 - 2017.01.24 (SAACKS00-003-R00)</p> <p><input type="radio"/> Release 001 - 2016.10.21 (SAACKS00-002-R01)</p>

Comparison BARTEC with Zebra Model:

BARTEC model	Based on Zebra model
BCS 3608 ^{ex} -NI	DS3608-HP
BCS 3608 ^{ex} -IS	
BCS 3678 ^{ex} -NI	DS3678-HP
BCS 3678 ^{ex} -IS	

2. 123 Scan Utility

123Scan is an easy-to-use, PC-based software tool that enables Zebra scanners to be set up quickly and easily. Supported scanners can be set up and updated via USB with this application.

Installation requirements

Hardware requirements

- Pentium Dual-Core E214 1,6GHz or Pentium Mobile Dual-Core T2060 or Pentium Celeron E1200 1,6GHz
- 2 GB RAM 1,2 GB free hard disk space
- USB-connection, 1.1 or higher, for the connection of USB scanners
- Minimum screen resolution = 1024 x 768 Pixel

For more information on installation requirements, please contact Zebra directly on the 123Scan Utility product page. 123Scan Utility is a Windows based application that is available free of charge.

Download available on:

<https://www.zebra.com/us/en/support-downloads.html>

- Software
- Utilities
- 123Scan Utility

3. Required Equipment

Generally required:

1 x Windows PC

With following specification:

- Windows XP, 7, 8.1 or 10
- USB interface
- Internet connection to keep 123Scan Utility up to date.

123Scan Utility must be installed on the Windows PC.


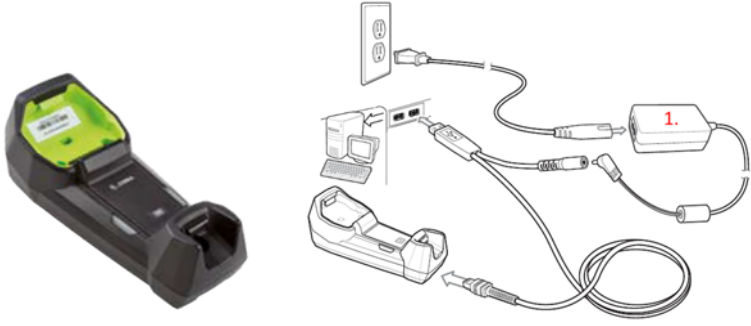



Required for corded version of the BCS 3608^{ex}-NI:

1 x Hand-held scanner BCS 3608^{ex}-NI



1 x USB programming cable
Type: B7-A2Z0-0046



Required for Bluetooth version of the BCS 3678 ^{ex} -NI:	
<p>1 x Hand-held scanner BCS 3678^{ex}-NI</p>	
<p>1 x Base station Type: G7-A0Z0-0010</p>	
<p>1 x USB connection cable Type: G7-A0Z0-0018</p>	
<p>1 x Power supply with DC connecting cable for base station Type: G7-A0Z0-0019</p>	
<p>1 x AC line cord Type: G7-A0Z0-0026 (EU + APAC) Type: G7-A0Z0-0024 (US + Canada)</p>	

Required for corded version of the BCS 3608^{ex}-IS:

1 x Hand-held scanner BCS 3608^{ex}-IS



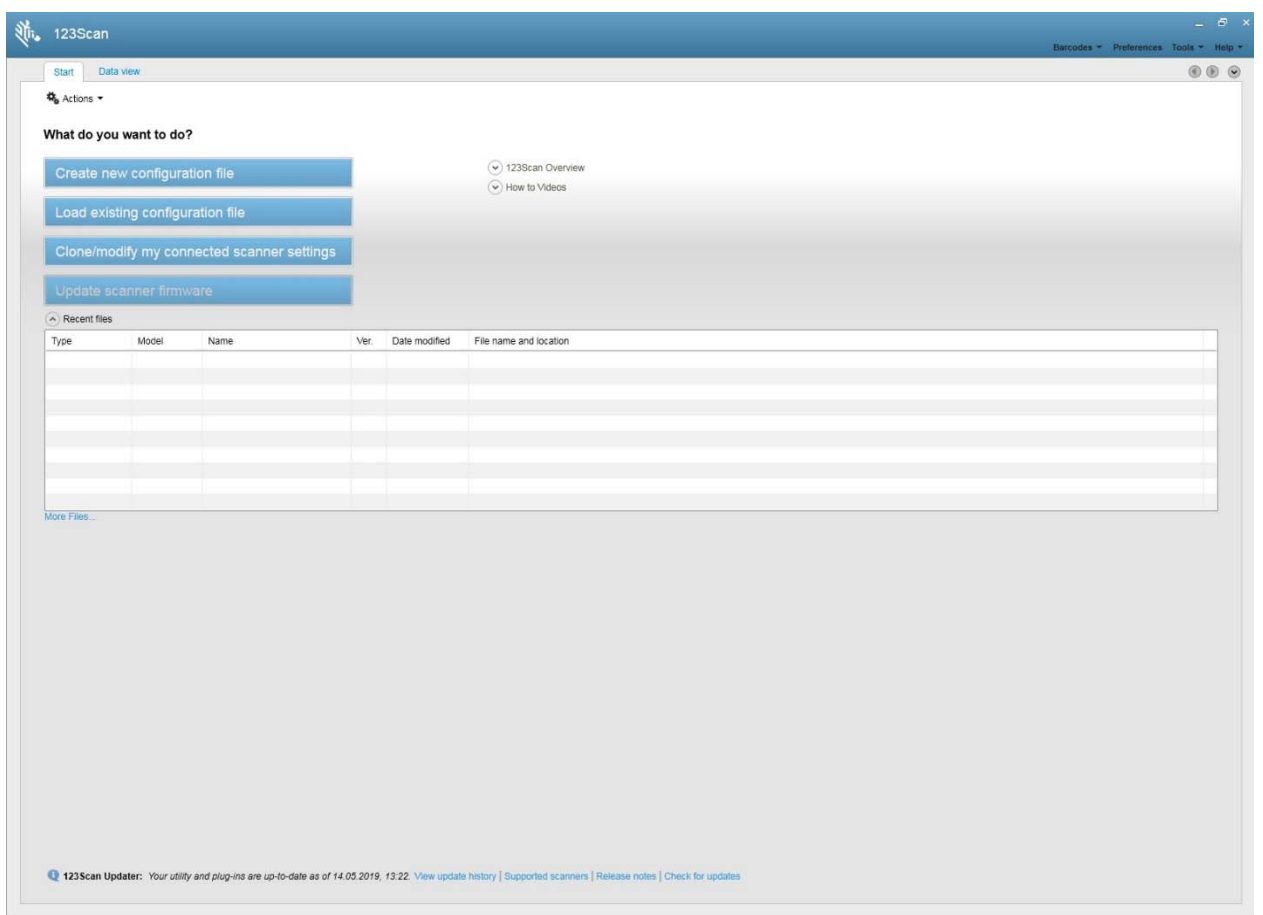
1 x USB programming cable
Type: 17-A1Z0-0020



Required for Bluetooth version of the BCS 3678 ^{ex} -IS:	
<p>1 x Hand-held scanner BCS 3678^{ex}-IS</p>	
<p>1 x Base station Type: 17-A1Z0-0014</p>	
<p>1 x USB connecting cable Type: 17-A1Z0-0020</p>	
<p>1 x Power supply with DC-connecting cable for base station Type: G7-A0Z0-0019</p>	
<p>1 x AC line cord Type: G7-A0Z0-0026 (EU + APAC) Type: G7-A0Z0-0024 (US + Canada)</p>	

4. Perform Firmware Update

1. Start 123Scan Utility.



2. Connect scanner via USB.
If necessary, scan the following barcodes.

Unpairing - optional

Only when using the BCS3678ex series.

Deletes all existing Bluetooth pairings.



Unpairing

Factory Default

Resets device to factory setting.

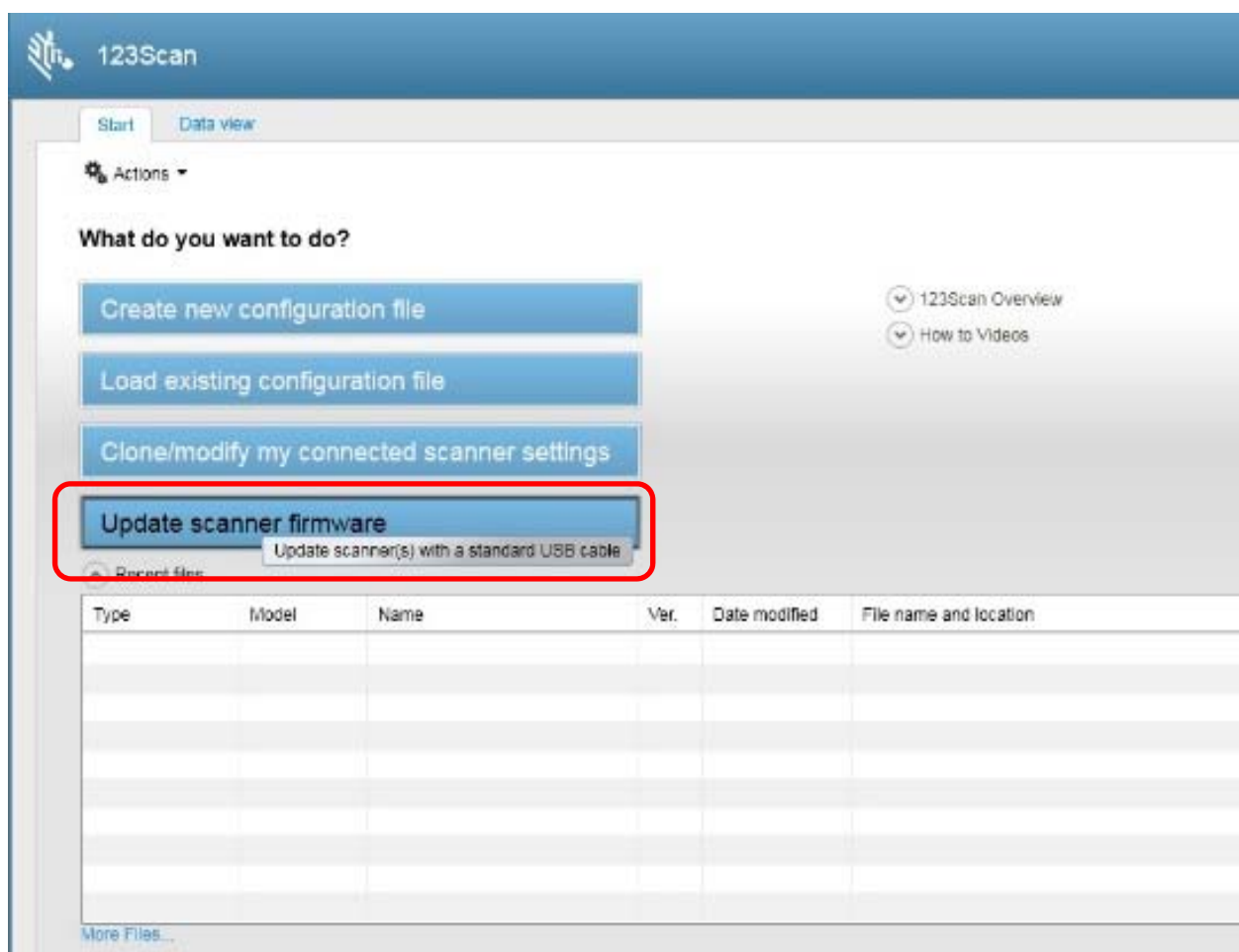
In factory setting, USB HID mode is enabled.



Set Factory Defaults

3. If scanner is connected to 123Scan Utility via PC, wait until connection is established. The scanner will normally beep to confirm.

4. Select **"Update scanner firmware"**.

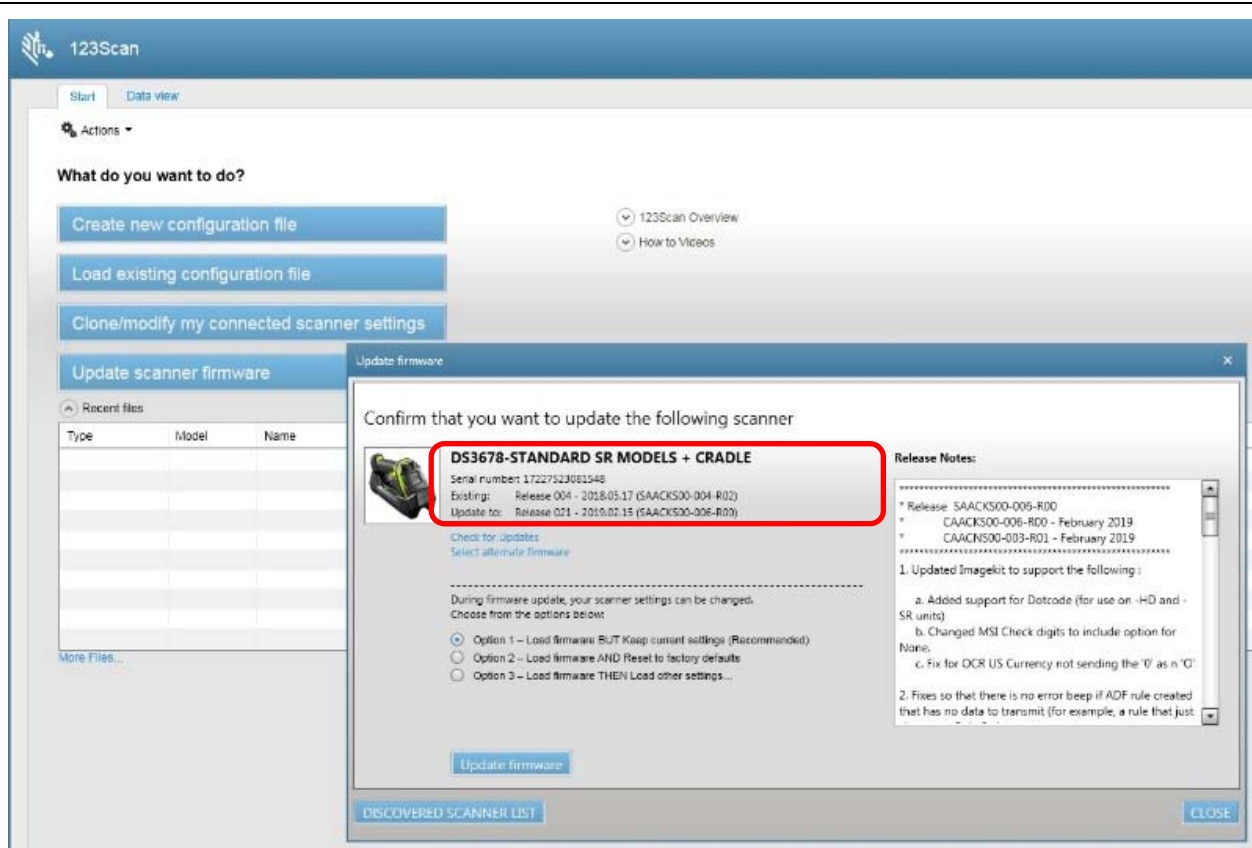


5. In the menu check if the firmware version is old and an update is available. In the picture below:

Existing: Shows the ACTUAL state. Currently installed firmware version

Update to: Shows what version is available.

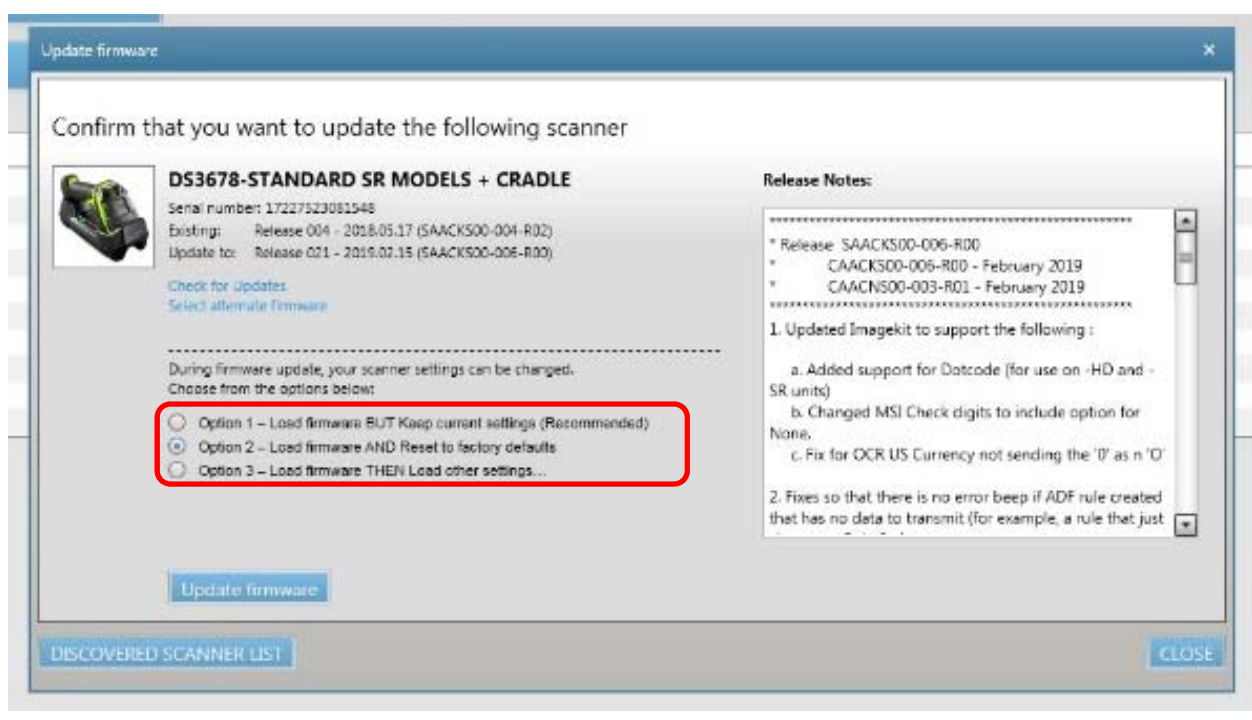
If the version **"Update to"** has a newer date than **"Existing"** then it is recommended to perform the update.



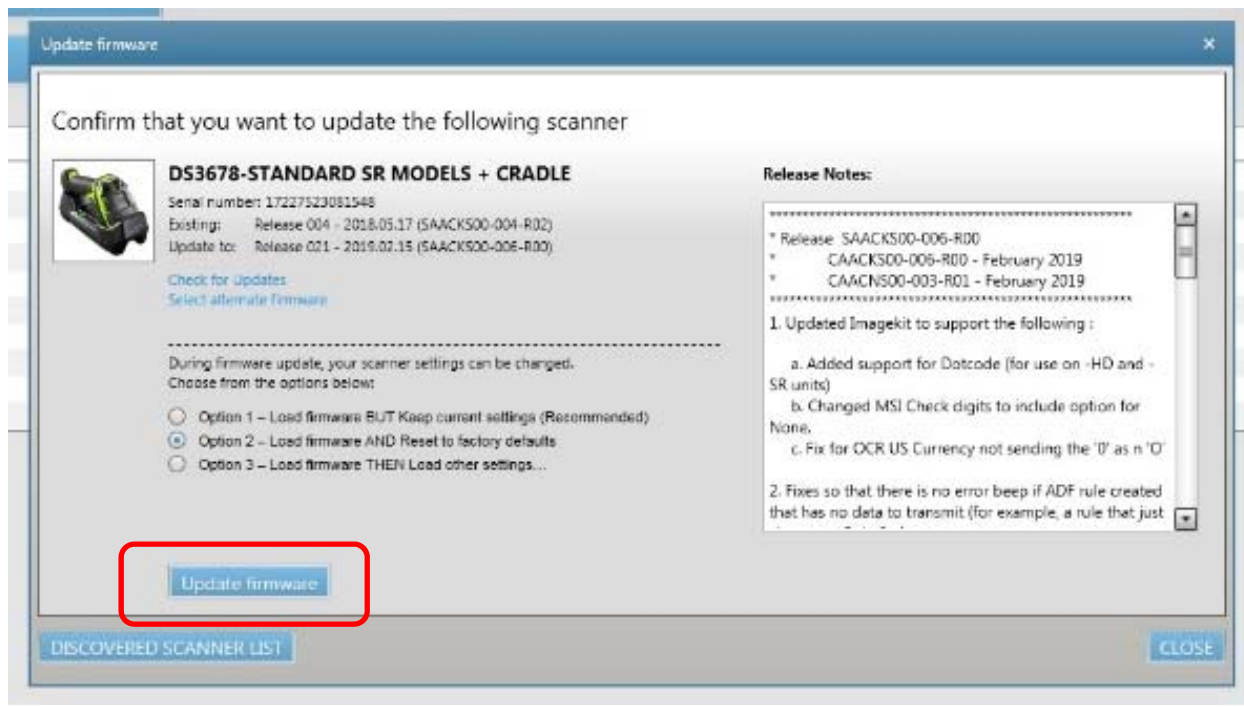
6. Preparing of the Firmware update.

Select whether the current programming is to be retained or whether the device is to be reset to factory settings after the update.

Important: Save data and settings beforehand to prevent data loss!

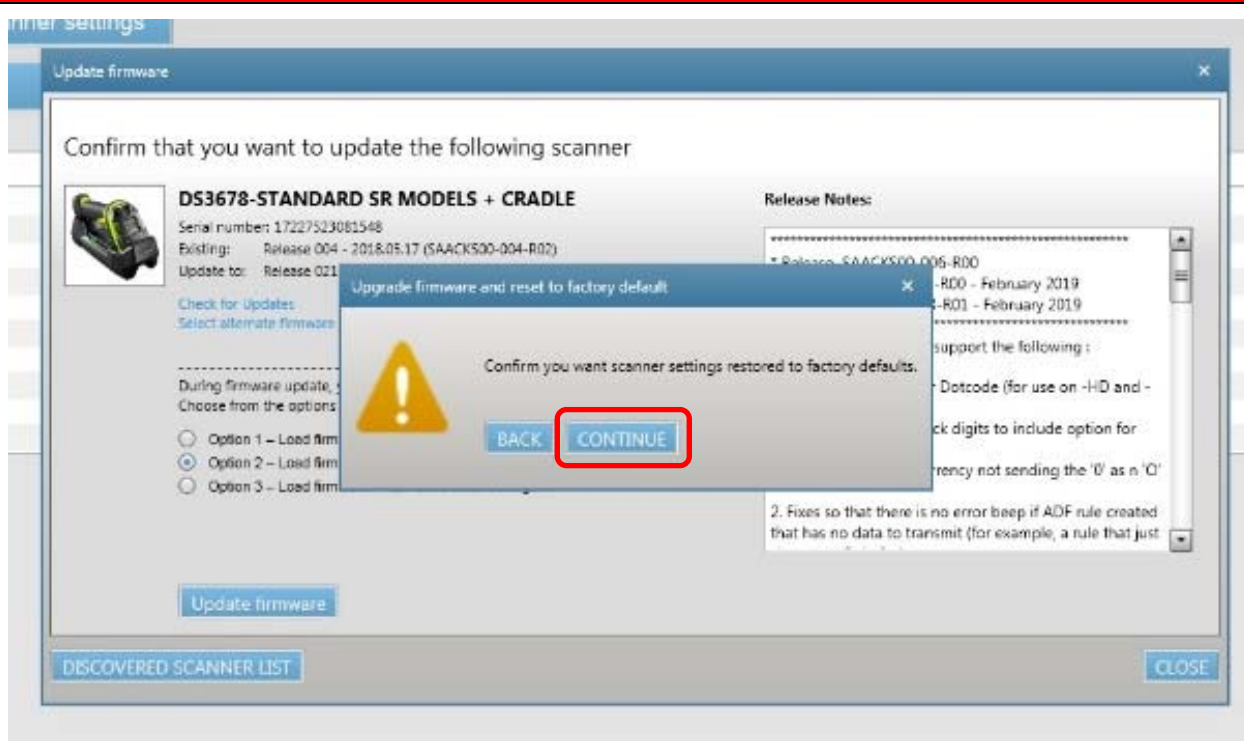


7. Start firmware update by selecting "Update firmware".

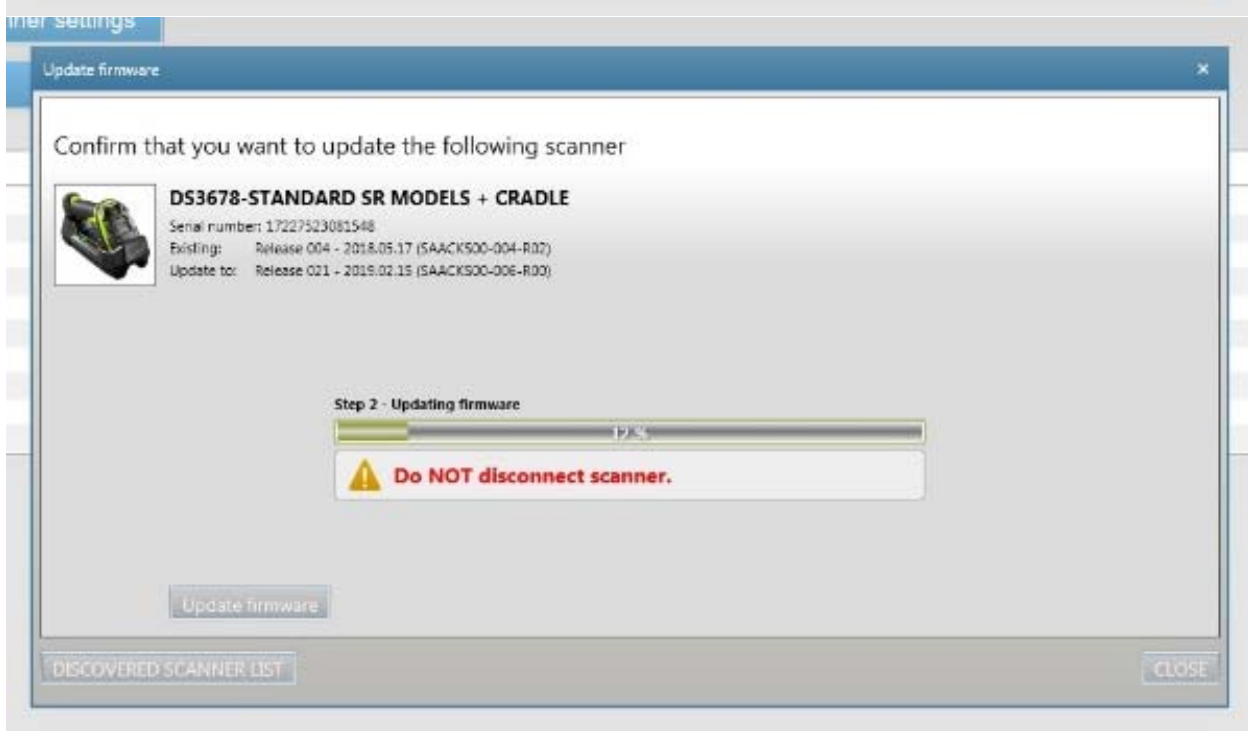
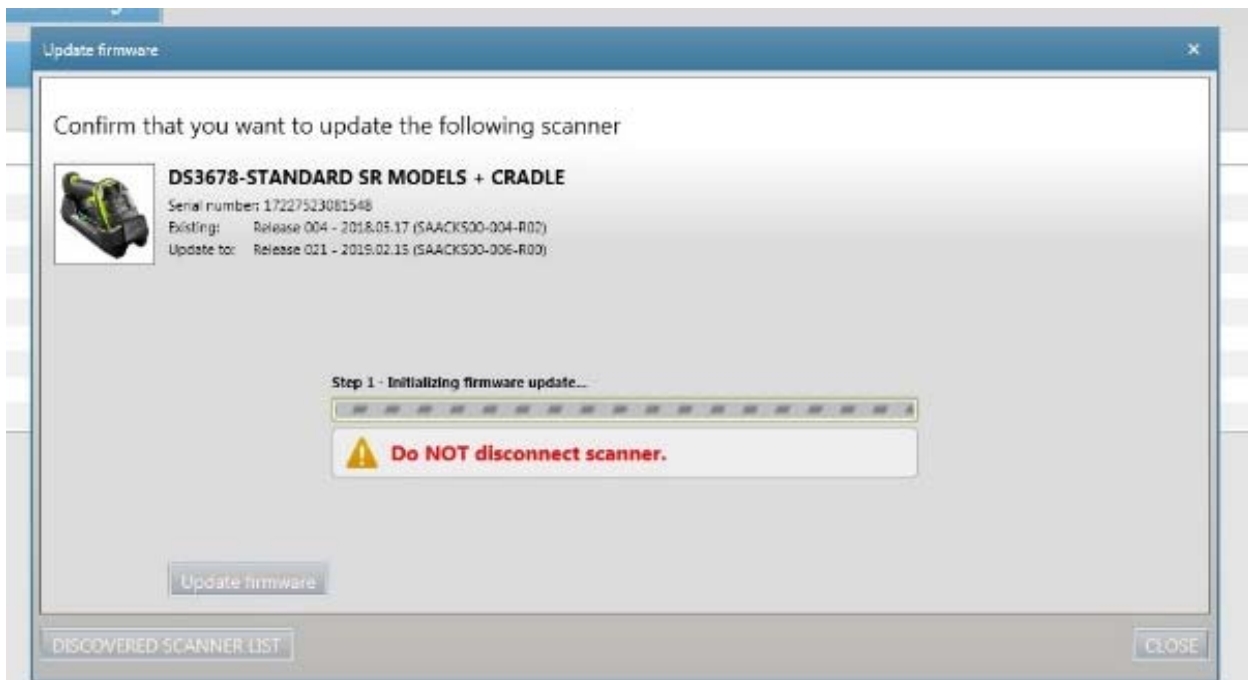


8. Confirm the update with "CONTINUE".

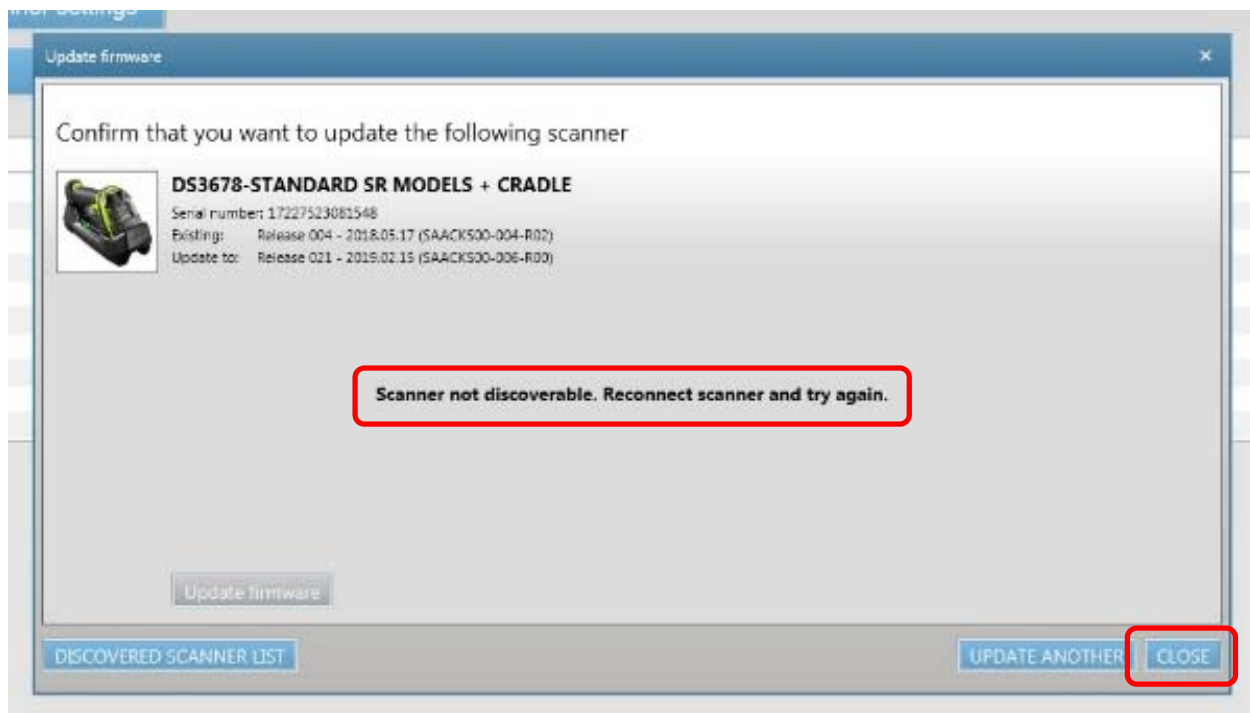
Important: The connection must not be interrupted to avoid damage to the device!



- 9. Update starts.
Update history is indicated by progress bar.



10. Update successfully completed.
Close the menu with "Close".



11. Check if update was successful.
Open the "Update scanner firmware" again and compare the installed version with the available one.
Both displayed versions must be identical.

