

## FAQ - Frequently Asked Questions

### 10.1" Industry Tablet PC

### PXE boot on Agile S and Agile S NI series

- Required hardware
- BIOS setup

#### Relevant for

- Agile S
- Agile S NI

Status: November 2020

**Reservation:** Technical data subject to change without notice. Changes, errors and misprints may not be used as a basis for any claim for damages.



- 1. Information of this FAQ ..... 2
  - 1.1 Reference documents ..... 2
- 2. About PXE ..... 4
- 3. Notes to PXE ..... 4
- 4. Required software and hardware ..... 4
  - 4.1 Required software ..... 4
  - 4.2 Required hardware ..... 5
- 5. PXE – BIOS setup ..... 6

# 1. Information of this FAQ



## Read carefully before commissioning the device.

The FAQ is an additional description to the available user manual and part of the device. The FAQ is directed at all persons who are entrusted with handling the device. Knowledge of the safety instructions and warnings in this FAQ and strict compliance with them is essential for safe handling.

- Carefully read the FAQ and especially the safety instructions before using the device.
- Make the FAQ accessible to all people who are entrusted with handling the device.

Warnings are used in this User Manual to warn of the risks of damage to property and personal injuries.

| Symbol      | Explanation   |
|-------------|---|
|             | Important advice and information for the effective, efficient and environmentally sound use of the product. |
| ✓           | Condition that must be met before the subsequent actions can be performed.                                  |
| ▶           | Individual steps you must take.   |
| 1., 2., ... | Various steps to be performed in the order specified.   |
| ➔           | Indication of the results of a step or of several steps for monitoring success.                             |

## 1.1 Reference documents



All documents are available online from the following websites:

- BARTEC: [www.bartec.com](http://www.bartec.com) or <http://automation.bartec.de>

| Document BARTEC   | Explanation   |
|---|---|
| Quick Start Guide of: <ul style="list-style-type: none"> <li>• Agile S</li> <li>• Agile S NI</li> </ul> | <u>It contains:</u> <ul style="list-style-type: none"> <li>• Guidelines on commissioning and the safe use of hand-held scanners (including installation, safety information related to explosion protection and information regarding programming)</li> </ul> |

| Document BARTEC  | Explanation  |
|--|--|
| User Manual of: <ul style="list-style-type: none"><li data-bbox="518 293 635 322">• Agile S</li><li data-bbox="518 338 667 367">• Agile S NI</li></ul> | <u>It contains:</u> <ul style="list-style-type: none"><li data-bbox="884 293 1439 465">• All essential information for the user to make full use of the device. This manual includes a description of the system functions and capabilities, contingencies and modes of operation, and step-by-step procedures for system access and use.</li><li data-bbox="884 481 1439 622">• Guidelines on commissioning and the safe use of hand-held scanners (including installation, safety information related to explosion protection and information regarding programming)</li></ul> |

## 2. About PXE

PXE = Preboot Execution Environment

The Agile S and Agile S NI series support the PXE boot mode.

The following instruction provides information about required equipment and BIOS setup.

## 3. Notes to PXE

First, check that your PXE server supports **UEFI** or **LEGACY** or both.

This information is required for correct setup.

The settings on Agile S and Agile S NI series and your PXE server must be identical that PXE boot can work correct.

## 4. Required software and hardware

Agile S and Agile S NI series only support Ethernet and must use one of the following accessories to setup and proceed PXE.

### 4.1 Required software

We recommend to use the latest available BIOS version for this devices.


The latest version is listed on BARTEC support & Download page.

<https://automation.bartec.de/tabletpcE.htm>

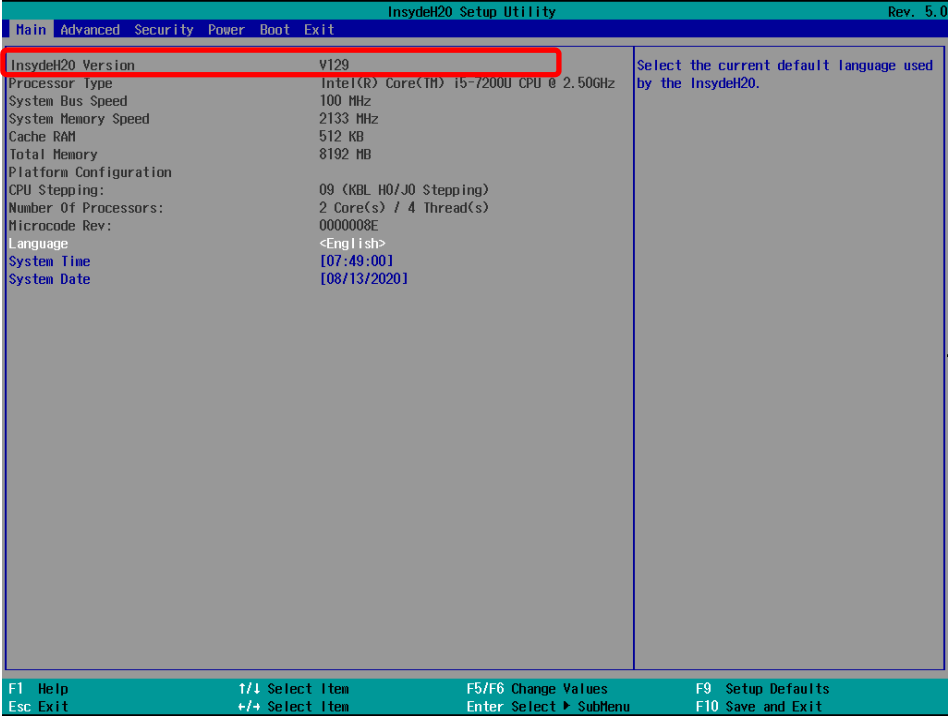
Select your product and go to section Driver. There you will find a Note what BIOS version is currently available.

If you have an older version you can use the contact information on same page to request the latest BIOS version.

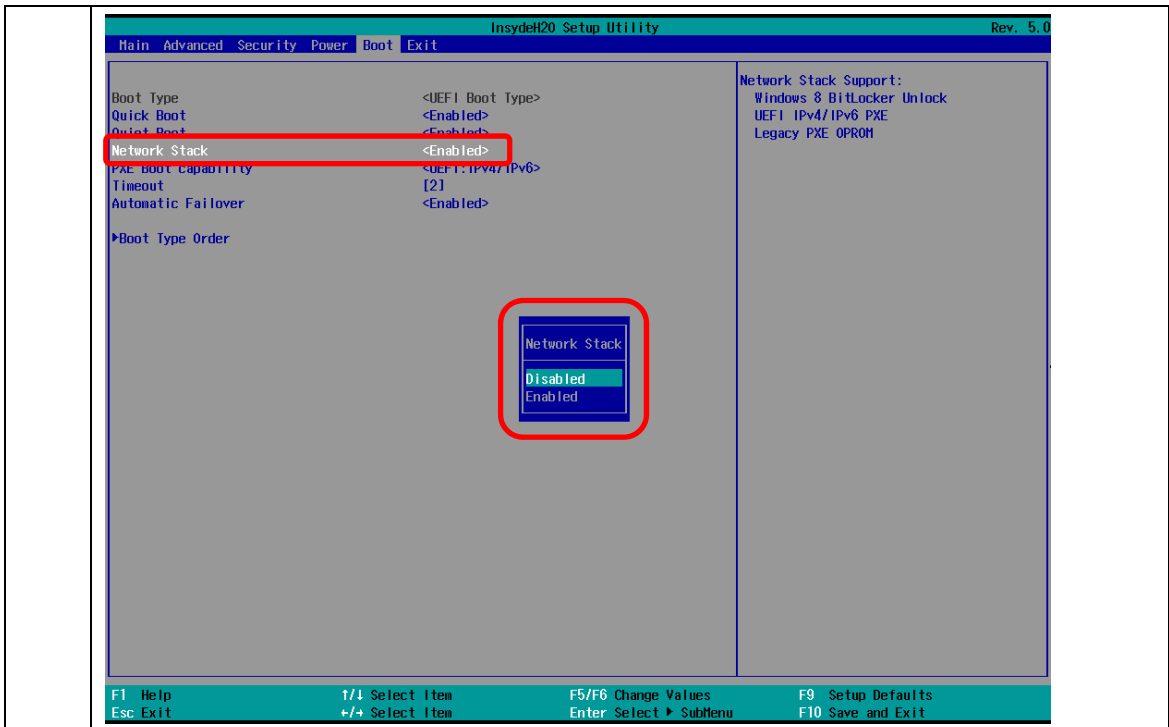
## 4.2 Required hardware

|  |   |
|--|---|
|   | <p><b>Docking station</b><br/>Type 03-9914-0022<br/>SAP 407990</p> <p>Compatible with:</p> <ul style="list-style-type: none"><li>• Agile X series</li><li>• Agile S series (only with latest hardware version)</li><li>• Agile X IS series</li></ul>  |
|  | <p><b>Docking station</b><br/>Type 03-9915-0017<br/>SAP 374918</p> <p><b>Note:</b> only supported with BIOS version v1.34 or later.</p> <p>Compatible with:</p> <ul style="list-style-type: none"><li>• Agile X series</li><li>• Agile S series (only with latest hardware version)</li></ul> |

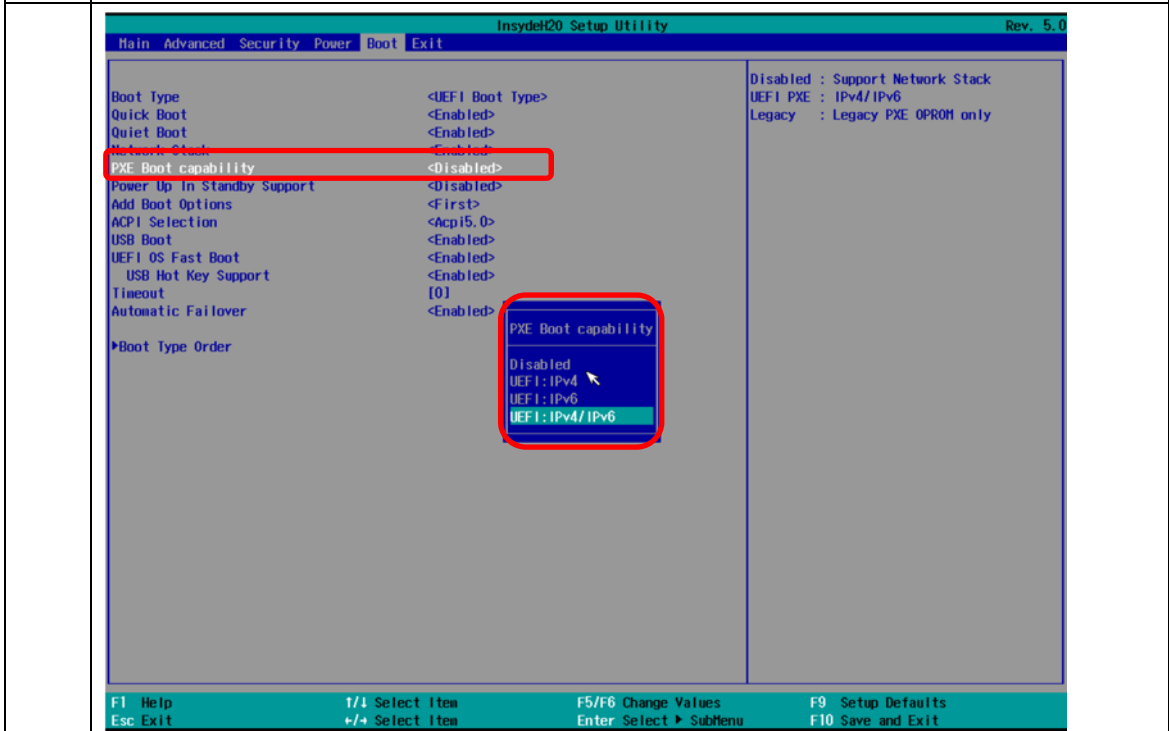
## 5. PXE – BIOS setup

|    |  |
|----|--|
| 1. | Connect external keyboard to the Agile X IS via docking station.   |
| 2. | Start or restart the device and enter BIOS.<br>Press “DEL”/“ENTF” key in start screen with BARTEC logo.  |
| 3. | Check that BIOS version is v1.29 or later.<br><i>(picture shows example for BIOS version v1.29)</i>  |
|    |   |
| 4. | Go to “Boot” and select “Network Stack”. <ul style="list-style-type: none"> <li>• Set “Network Stack” to “Enable”</li> <li>• Default setting is Default</li> </ul> |

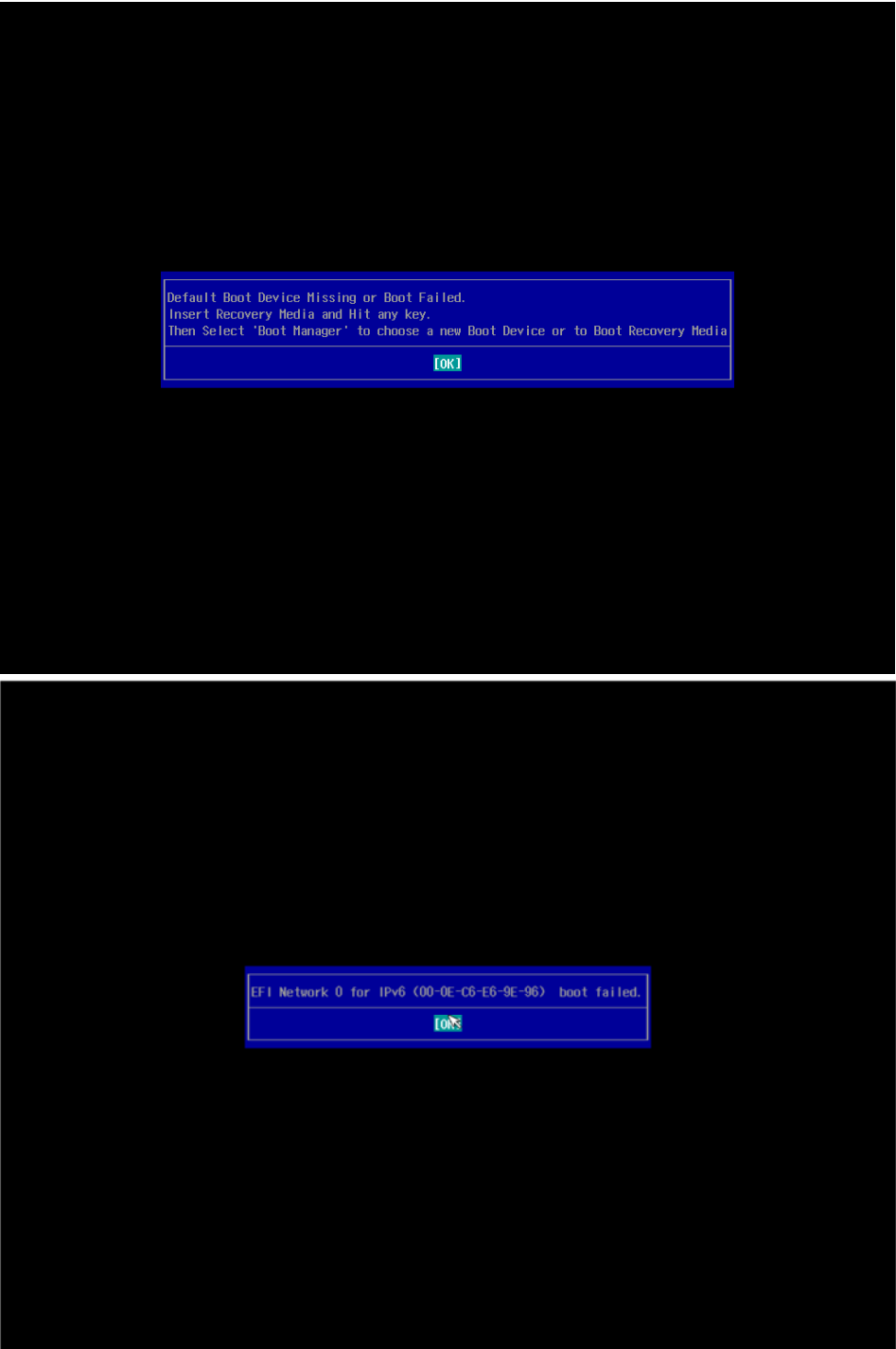




Change the boot capability to UEFI to "IPv4/IPv6" that support both network protocols.



5. Go to "Exit".  
Select "Save Changes and Exit" or press "F10" key to save and exit BIOS.
6. Device automatically perform restart and auto connects media server.
7. If settings are not correct and matching with server side then you will see one of the following screens.  
In this case please check your server settings.

|    |  |
|----|--|
|    |   |
| 8. | Press "ESC" key to go into the boot manager.<br>If you have more LAN available then you can choose the correct LAN for PXE boot. |

|    |  |
|----|--|
|    |  <p>The screenshot shows a 'Boot Manager' window with a 'Boot Option Menu'. The menu lists the following options: 'EFI Boot Devices', 'EFI Network 0 for IPv6 (00-03-E1-95-77-E8)', 'EFI Network 0 for IPv4 (00-03-E1-95-77-E8)', 'Windows Boot Manager (Phison SMP256GTB4C0-S11)', and 'Internal EFI Shell'. Below the list, it states: '↑ and ↓ to change option, ENTER to select an option, ESC to exit'. At the bottom, there are two columns of navigation instructions: 'F1 Help' and 'Esc Exit' on the left; '↑/↓ Select Item' and 'Enter Select ▸ SubMenu' on the right.</p> |
| 9. | Select your LAN and press "Enter" to confirm your selection.<br>Or press "ESC" key to leave the menu.  |