

PXE set-up and FAQs

Agile S and Agile S NI

Type B7-A2B4-..../.....

ATEX / IECEx Zone 2

IECEx Zone 2

UL Class I Division 2

Type G7-A0B1-..../.....

Standard non Ex version

Revision 0 / Status: 08th June 2020

Reservation: We reserve the right to make technical modifications. Changes, errors and misprints shall not justify any claim for damages.

Table of contents

Table of contents.....	2
1. PXE.....	3

1. PXE

PXE = Preboot Execution Environment
 The Agile S series support the PXE boot mode.

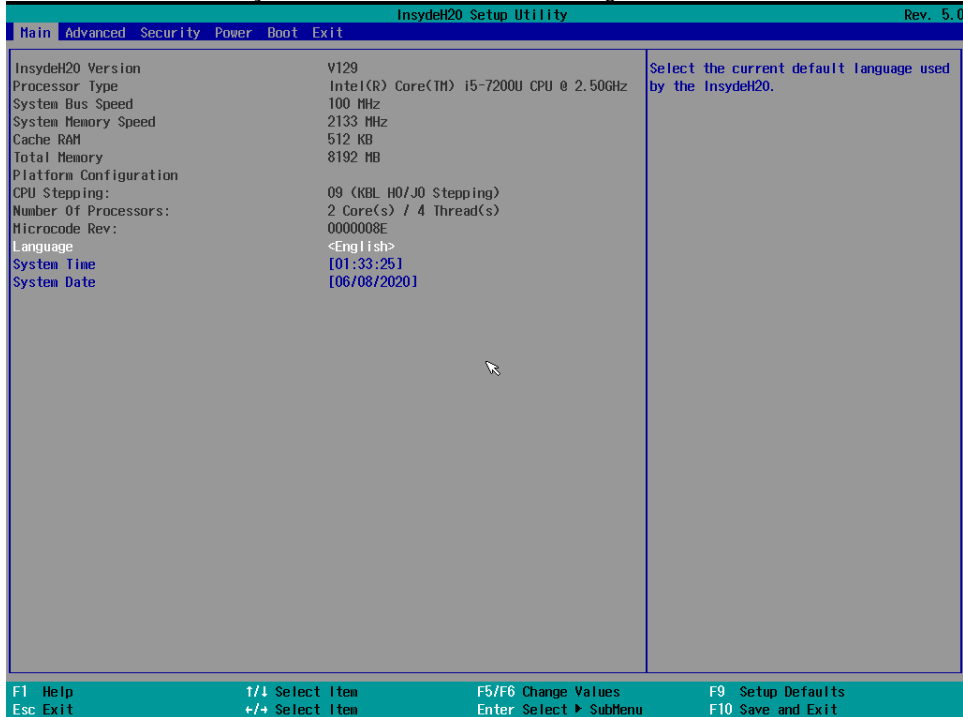
PXE – Notes:

- First check, if your PXE server supports UEFI or Legacy or both?
 Because it is necessary that Agile S BIOS setting must correlate with server settings.
 UEFI to UEFI or Legacy to Legacy.
 Windows 10 requires UEFI.
- Agile S only support Ethernet and must use one of following accessories:

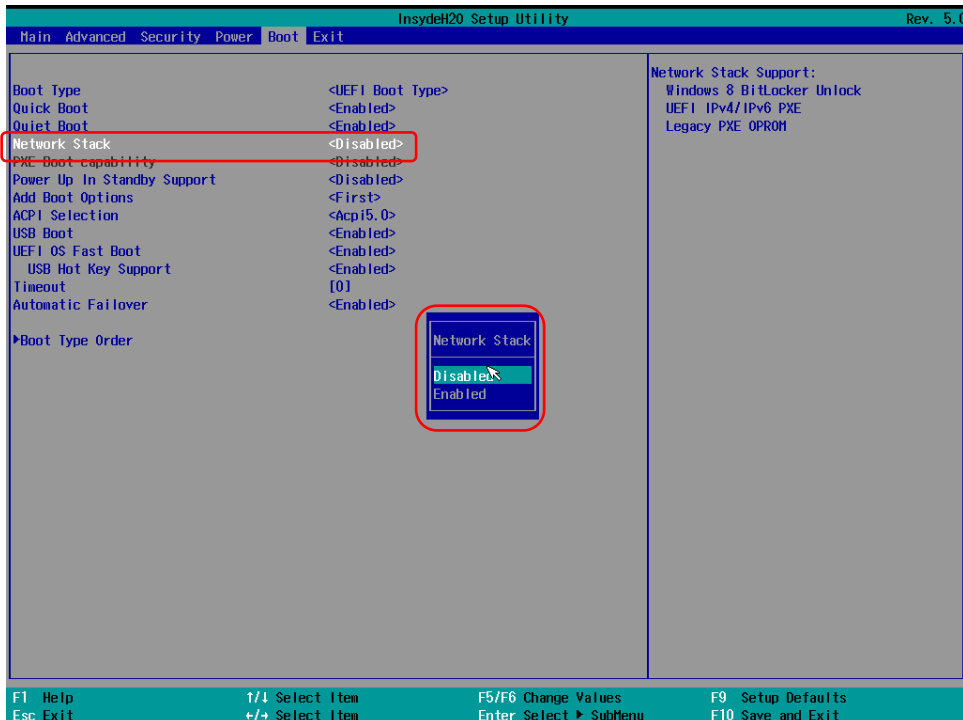
	<p>Docking station suitable for Agile, Agile X, Agile S and Agile S NI Type: 03-9915-0017 SAP 374918</p>
	<p>Docking station suitable for Agile, Agile X, Agile X IS, Agile S and Agile S NI Type: 03-9914-0022 SAP 407990</p>
<p>BIOS</p>	<p>We recommend to use latest available BIOS version.</p>

PXE – Setup:

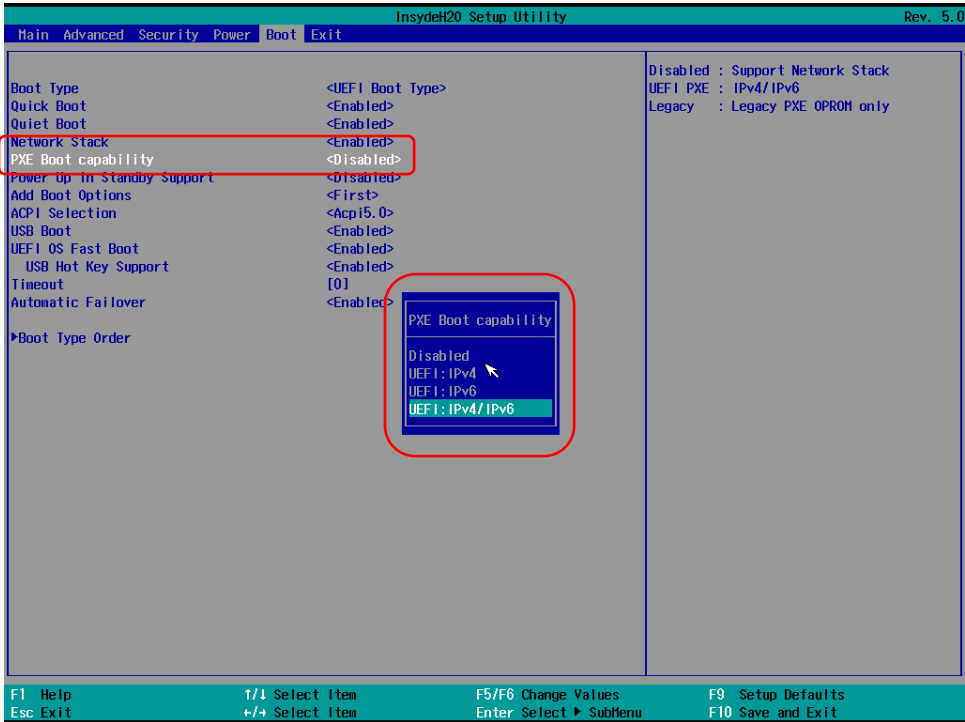
1. Connect external keyboard to the Agile S.
2. Start or restart the device and enter BIOS.
Press “DEL”/“ENTF” key in start screen with BARTEC logo.



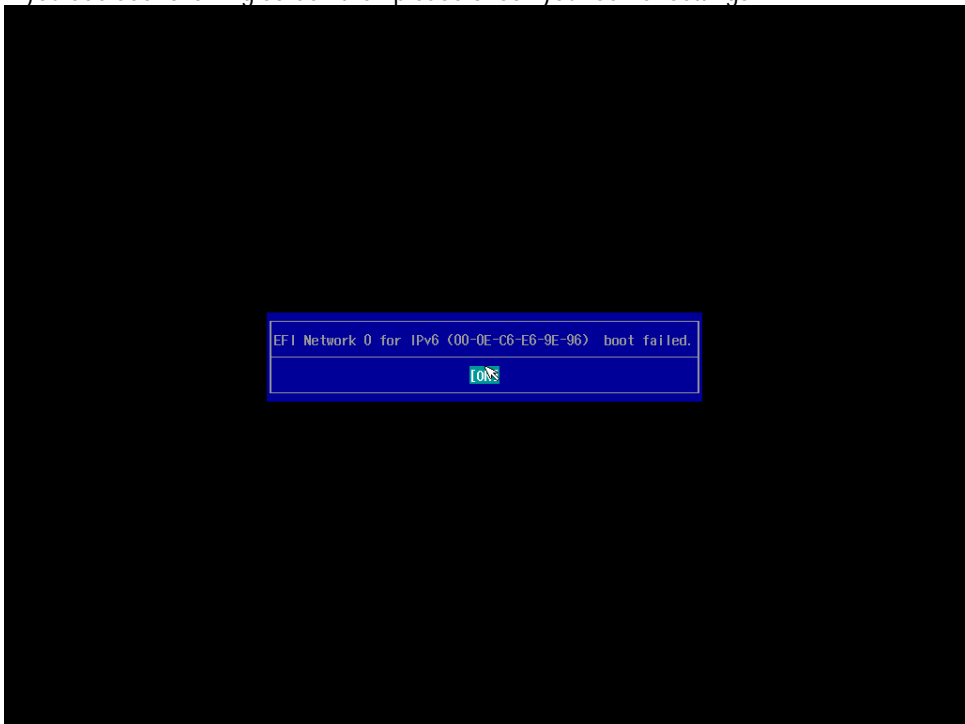
3. Go to “Boot” and select “Network Stack”
Set it to: Enable.



- 4. Go to "Boot" and select "PXE Boot capability".
Set it to: UEFI: IPv4/IPv6



- 5. Press "F10" to save the settings and exit BIOS.
Device perform restart.
- 6. If you see see following screen then please check your server settings.



7. You can press "ESC" key to go into the boot manager.
In case that you have more as 1 LAN then you have the opportunity to select the LAN in boot manager.

