

PXE set-up and FAQs

Agile X

Type B7-A234-..../.....

ATEX / IECEx Zone 2

IECEx Zone 2

UL Class I Division 2

Revision 0 / Status: 09th July 2019

Reservation: We reserve the right to make technical modifications. Changes, errors and misprints shall not justify any claim for damages.

Table of contents

Table of contents.....	2
1. PXE.....	3

1. PXE

PXE = Preboot Execution Environment
 The Agile X series support the PXE boot mode.

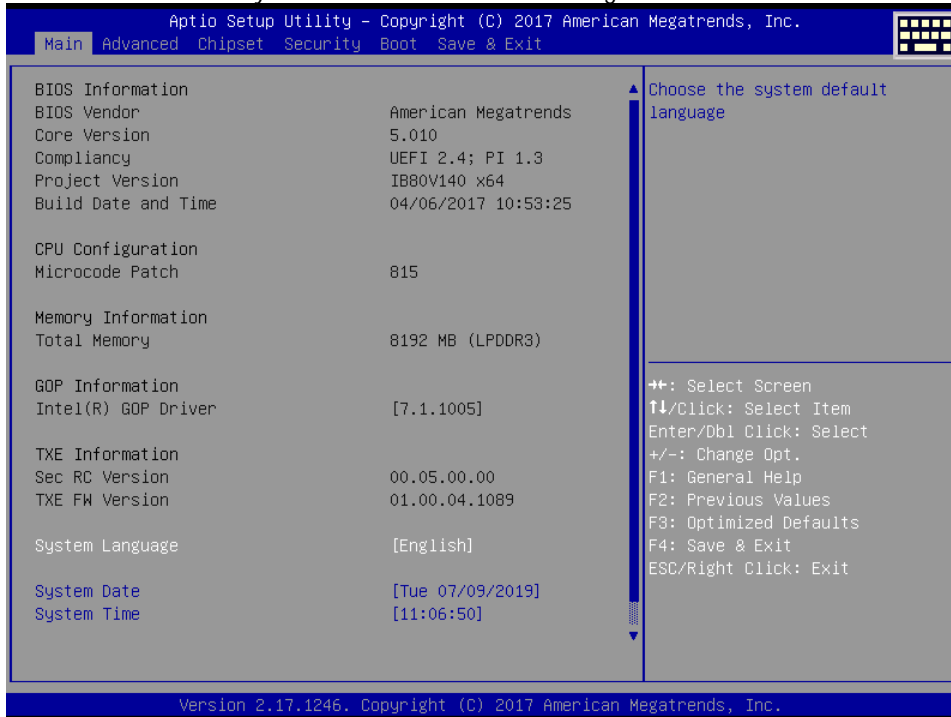
PXE – Notes:

- First check, if your PXE server supports UEFI or Legacy or both?
 Because it is necessary that Agile X BIOS setting must correlate with server settings.
 UEFI to UEFI or Legacy to Legacy.
- Agile X only support Ethernet and must use one of following accessories:

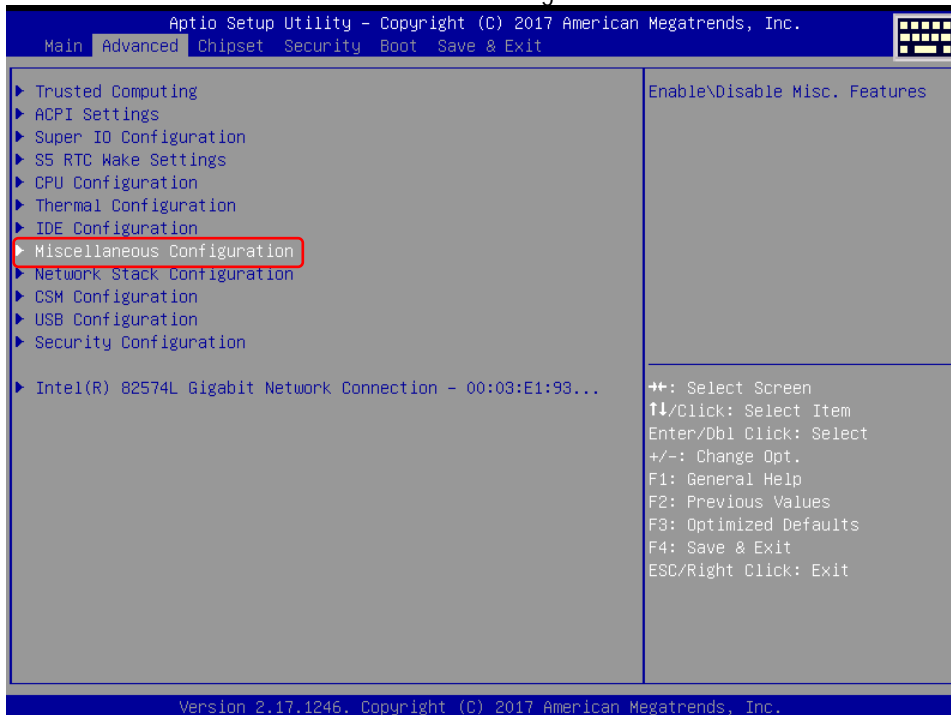
	<p>Docking station suitable for Agile and Agile X Type: 03-9915-0017 SAP 374918</p>
	<p>Docking station suitable for Agile, Agile X and Agile X IS Type: 03-9914-0022 SAP 407990</p>
	<p>Adapter cable LAN for LAN from 30 pin extension port. Type: 03-9919-0022 SAP 374937</p>
<p>BIOS</p>	<p>We recommend to use latest available BIOS version.</p>

PXE – Setup:

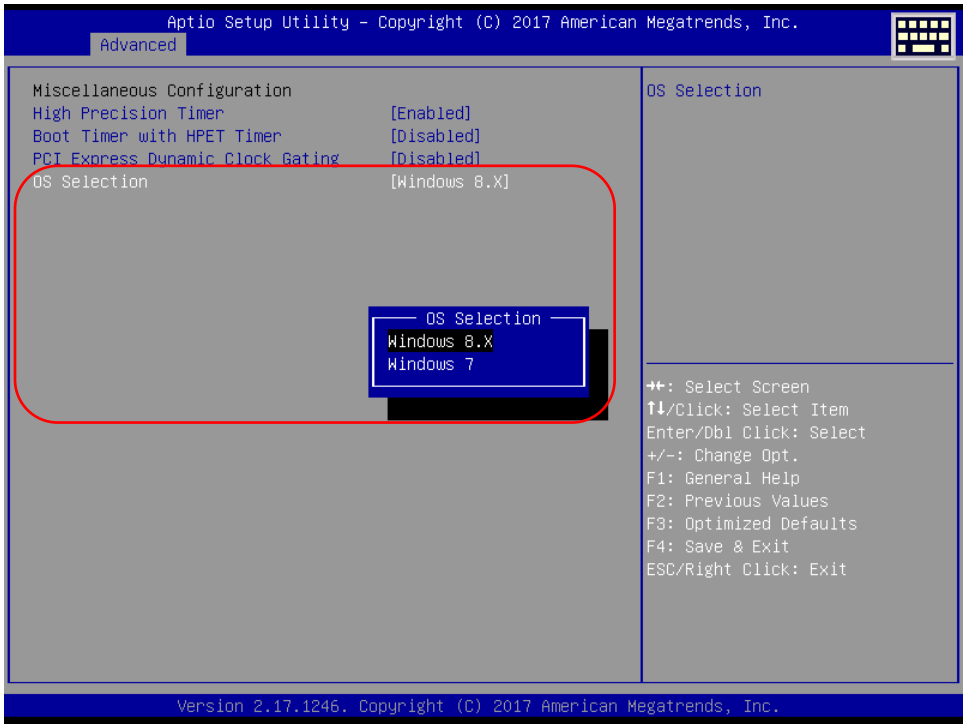
1. Connect external keyboard to the Agile X.
2. Start or restart the device and enter BIOS.
Press “DEL”/“ENTF” key in start screen with BARTEC logo.



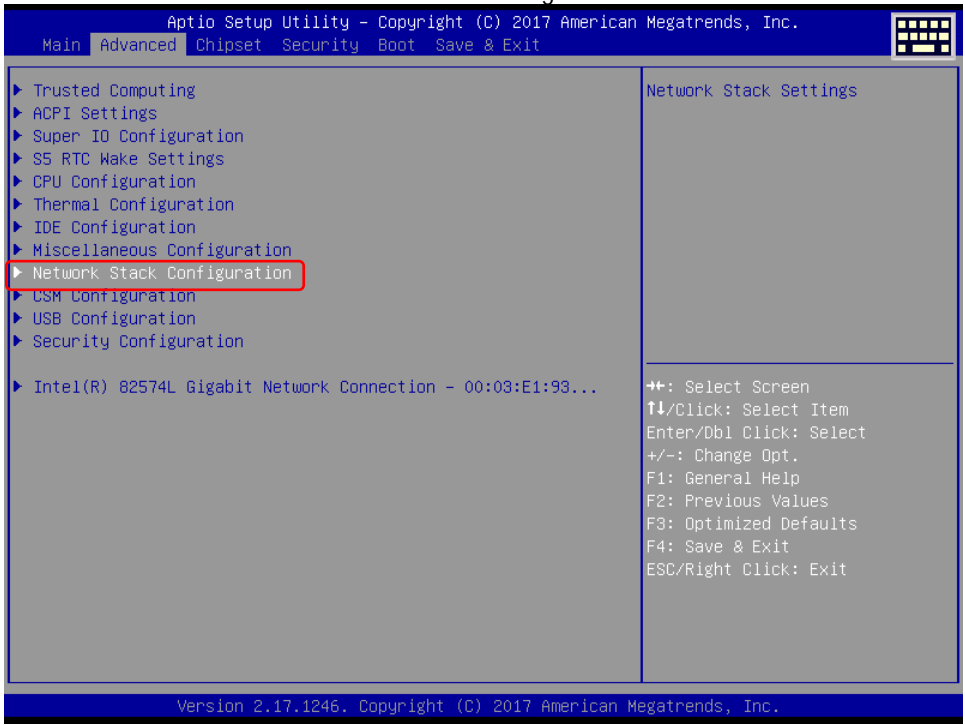
3. Go to “Advanced” and select “Miscellaneous Configuration”



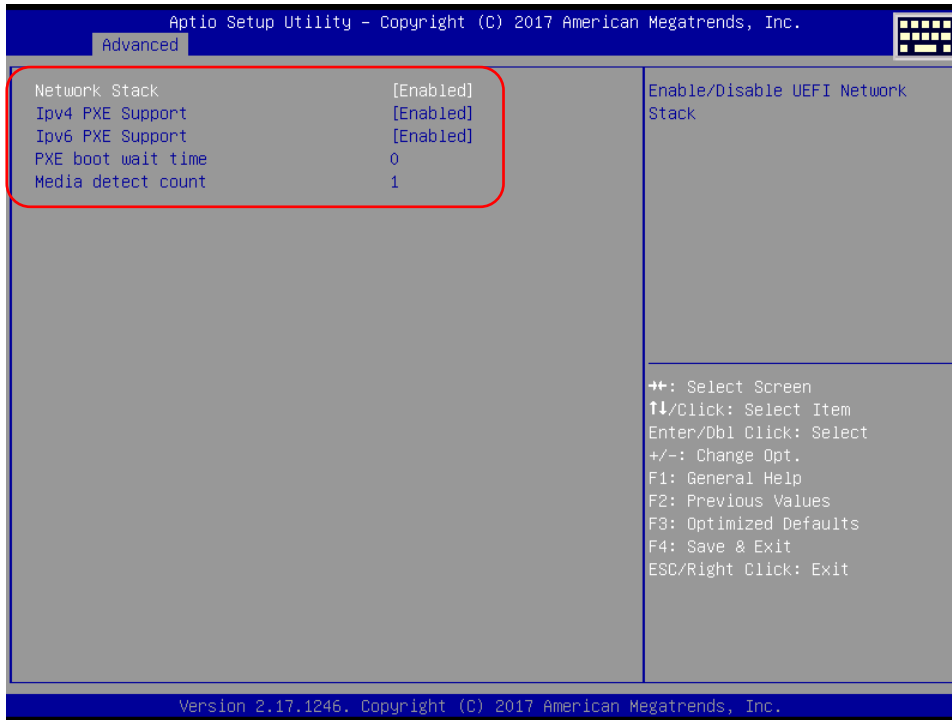
4. Go to “OS Selection” and select your operating system.
Windows 8.X => for Windows 8.1 or Windows 10 operating system
Windows 7 => for Windows 7 operating system



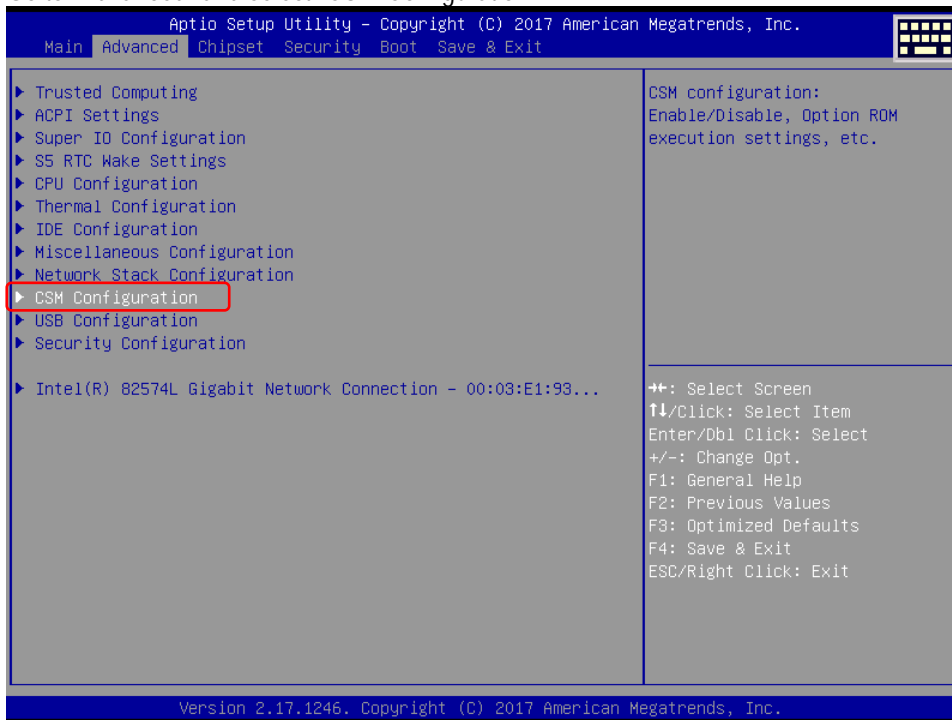
5. Go to "Advanced" and select "Network Stack Configuration"



Enable "Network Stack" and make your settings compliant to your server.

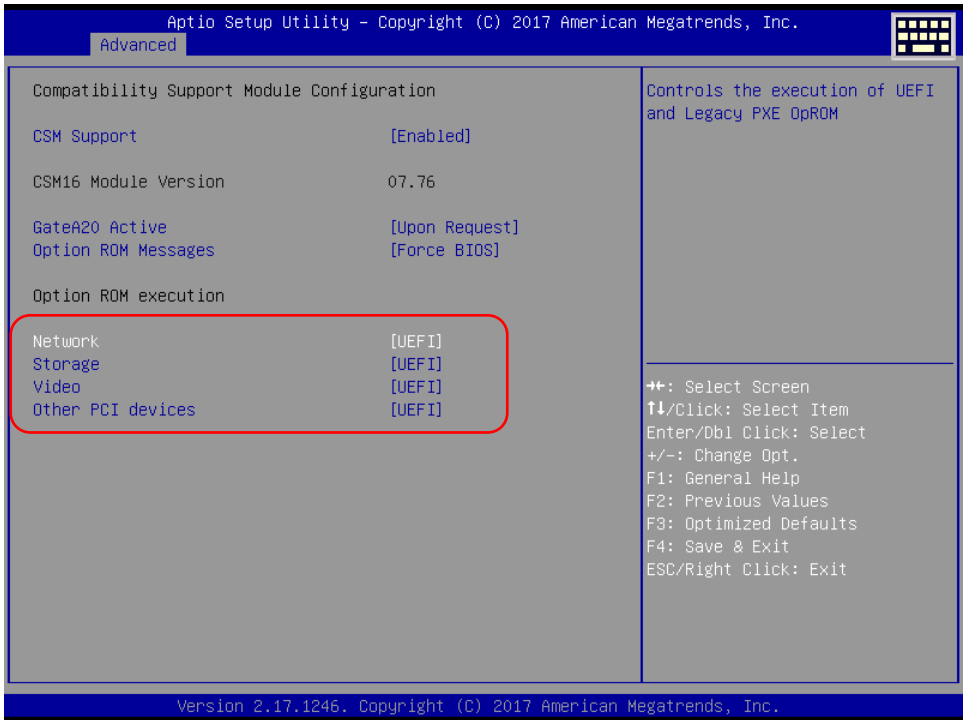


6. Go to "Advanced" and select "CSM Configuration"

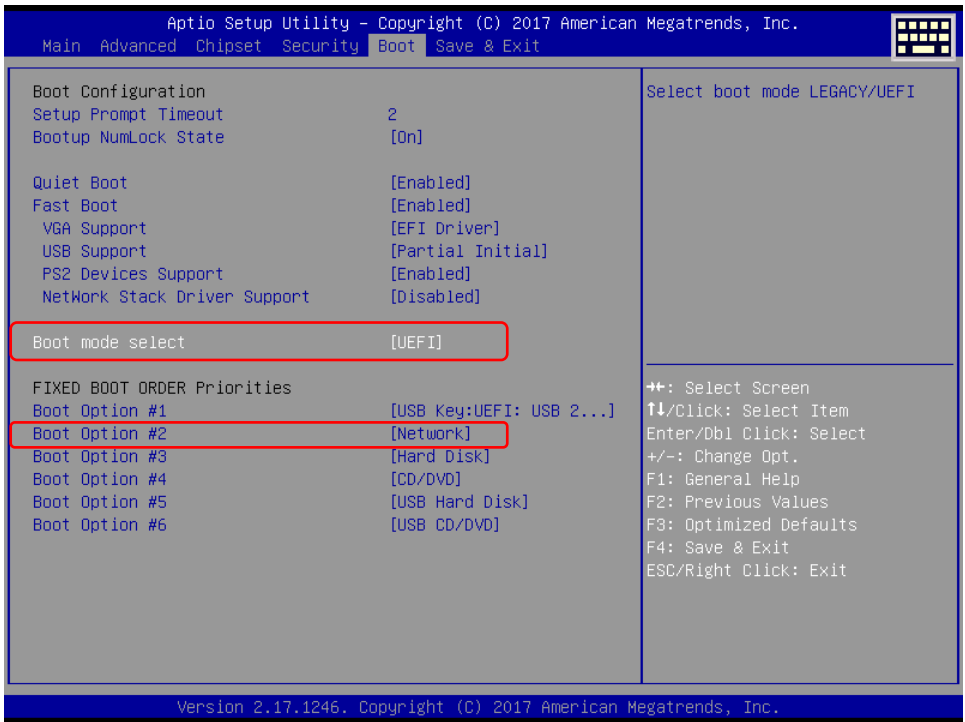


Setup following settings according to your server to "Legacy" or "UEFI".

- Network
- Storage
- Video
- Other PCI devices



7. Go to "Boot" and select:
- "Boot mode select" according to your server to "Legacy" or "UEFI"
 - Boot option to "Network"



8. Go to "Save & Exit".
- Select "Save Changes and Exit" to leave BIOS.

