

**TPM1.2 set-up and FAQs**

Agile X IS

Type 17-A1B4-..../.....

ATEX / IECEx Zone 1

IECEx Zone 1

UL Class I Division 1

Revision 0 / Status: 05th February 2019

**Reservation:** We reserve the right to make technical modifications. Changes, errors and misprints shall not justify any claim for damages.

## Table of contents

Table of contents.....	2
1. TPM1.2 .....	3

# 1. TPM1.2

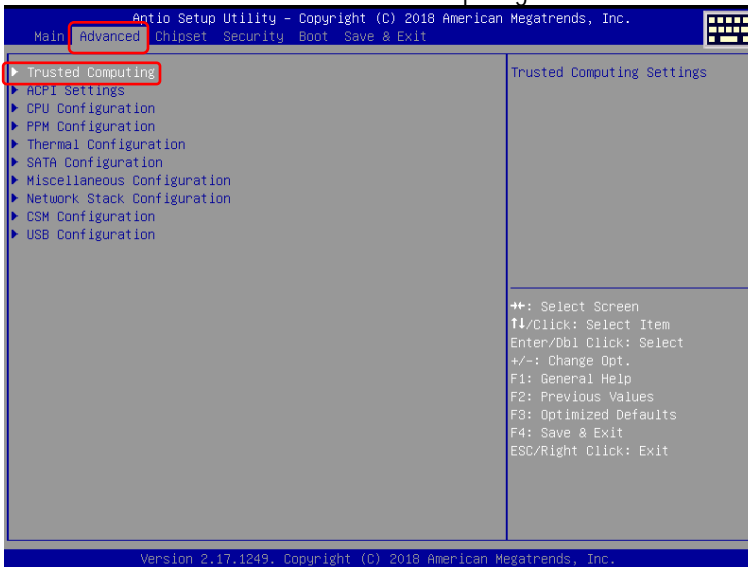
TPM = Trusted Platform Module

The Agile X IS series support the TPM1.2 version.

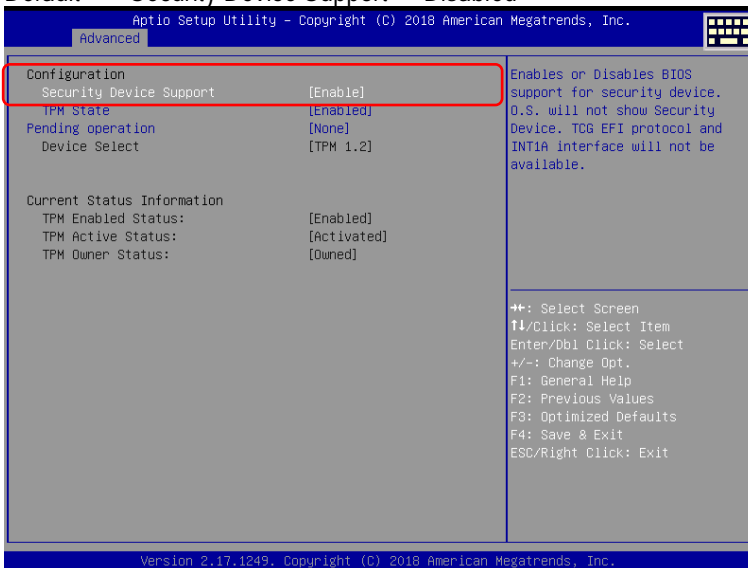
In default setting is TPM1.2 deactivated.

## TPM1.2 – activation:

1. Start or restart the device and enter BIOS.  
Press “DEL”/“ENTF” key in start screen with BARTEC logo.
2. Go to “Advanced” and select “Trusted Computing”

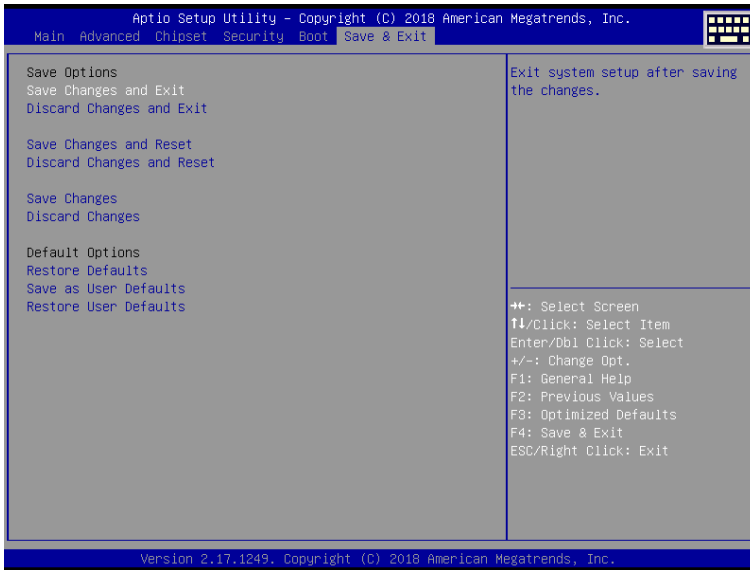


3. Go to “Configuration” and “Enable” the “Security Device Support” option.  
Default => “Security Device Support” = Disabled



4. Select "Save & Exit" to leave BIOS.

Device restart new and load TPM1.2.



5. Check in "Device Manager" that TPM1.2 is now activated and available.

