

Introduction



This guide will describe how to create a bootable USB Flash Drive to update the Operating System of your BARTEC tablets.

Notes for installations

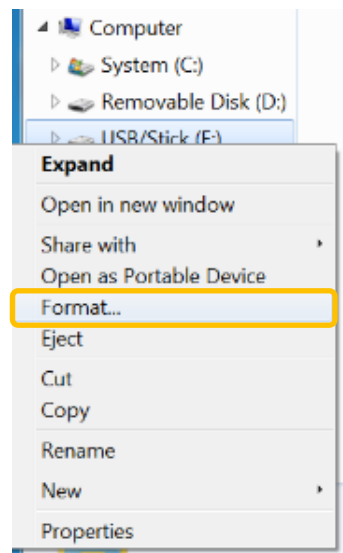
- (1) Only install Operating Systems which are provided from BARTEC. Installing an Operating System that is not designed for a BARTEC device may not work correctly with them.
- (2) Using the Format and Bootlce utility will delete all data currently on the USB flash drive.
- (3) Make sure that PC, Notebook or Tablet (referred to in the following as the "computer") is running on AC Power during the preparation process. Do not unplug the AC Adapter, or any other connected external devices during the process. Do not restart or turn off the computer during the process as it may cause permanent damage to the file system structure of the USB Flash Drive.

Requirements

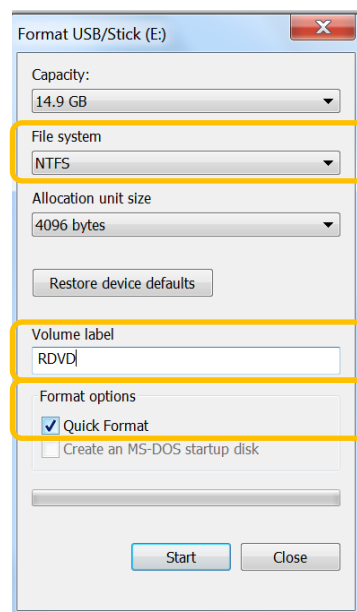
- ▶ Computer with a Windows 7/8/10 operating system
- ▶ USB flash drive (16GB or more)
- ▶ Bootlce utility

Format USB flash drive

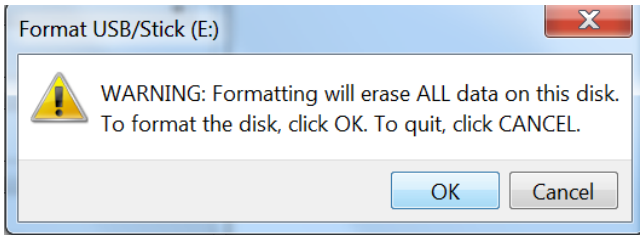
- ▶ Insert the USB-Sticks your Computer.
- ▶ Start Windows Explorer and select the USB Flash Drive
- ▶ Open the drop-down menu with right mouse click on the USB-Stick
- ▶ Select the "Format" option in the menu



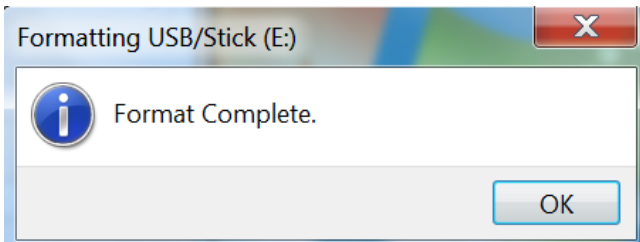
- ▶ A new "Format" window with format options will appear. Choose following:
NTFS "File system"
type RDVD for the "Volume label"
Activate check box for Quick format Quick Format
- ▶ Press "Start" button to begin the process



- ▶ Press "Ok" button in the next message to continue the process

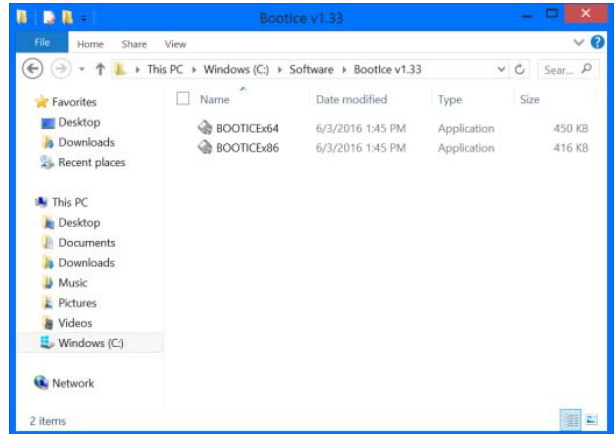


- ▶ When the formatting process is complete, the message "Formatting was successful" (Format Complete) appears.
- ▶ Press the "Ok" button to close this message. The Format partition window closes automatically.

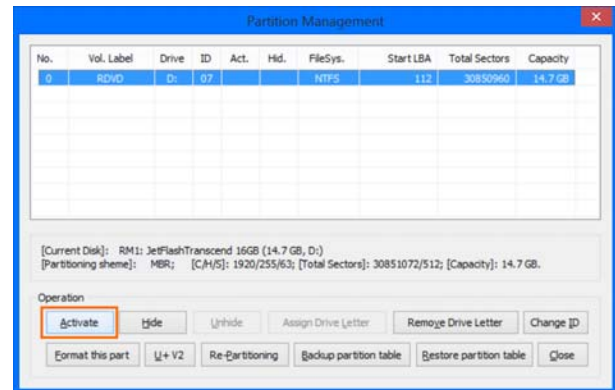


Creating a bootable USB flash drive

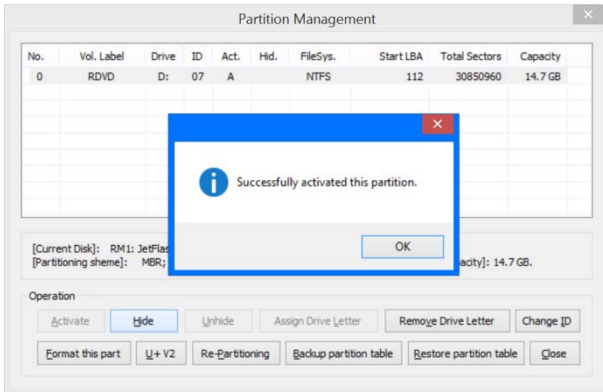
- ▶ Insert an USB flash drive into a running computer
- ▶ Start the 32-bit or 64-bit Bootice's version depending on the system you are running



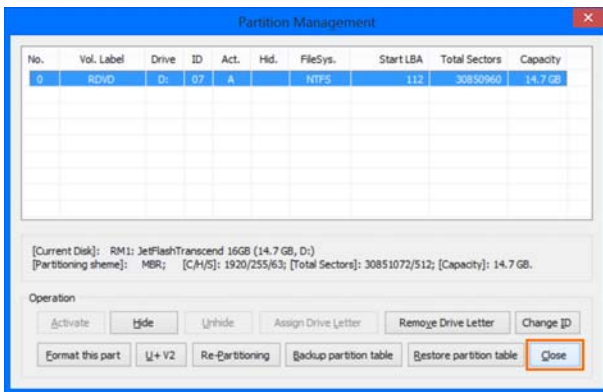
- ▶ Make sure that the USB flash drive is selected as the destination in the "Destination Disk" area. If not, select the right USB flash drive from the drop-down list
- ▶ Press "Activate" button to mark the partition as active



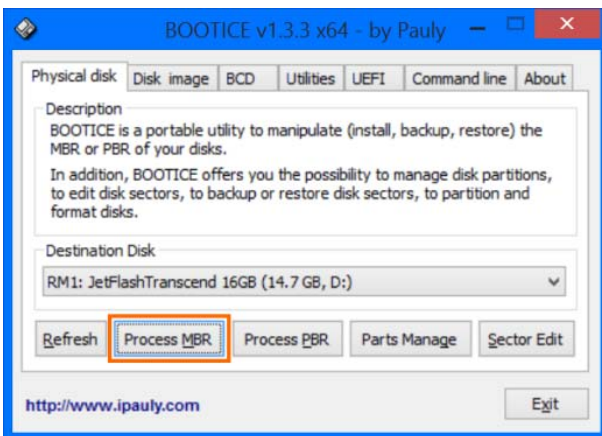
- ▶ A message "Successfully activated this partition" will appear after completing the process
- ▶ Press "Ok" button to close this message



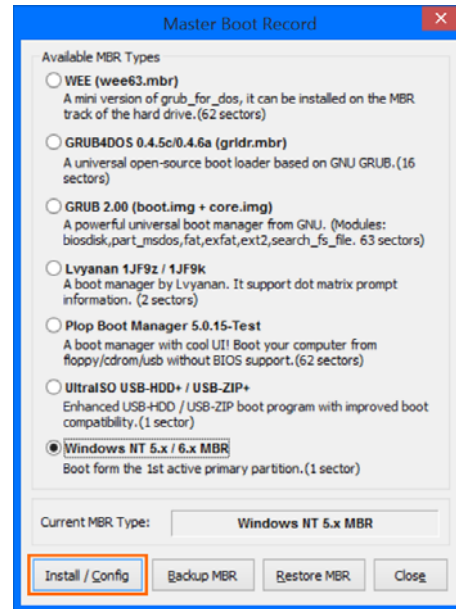
- ▶ Press "Close" button to return to the main menu



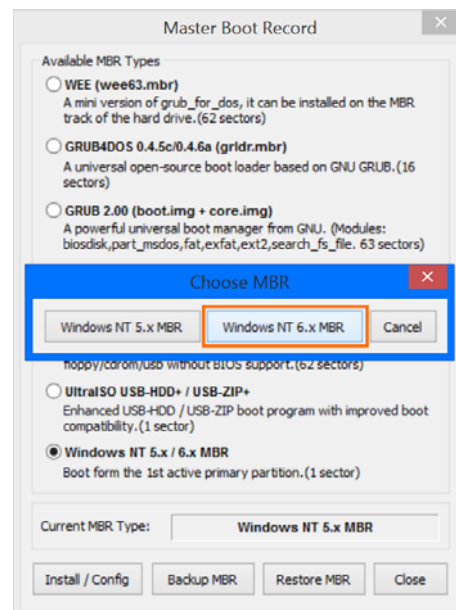
- ▶ Press "Process MBR" button



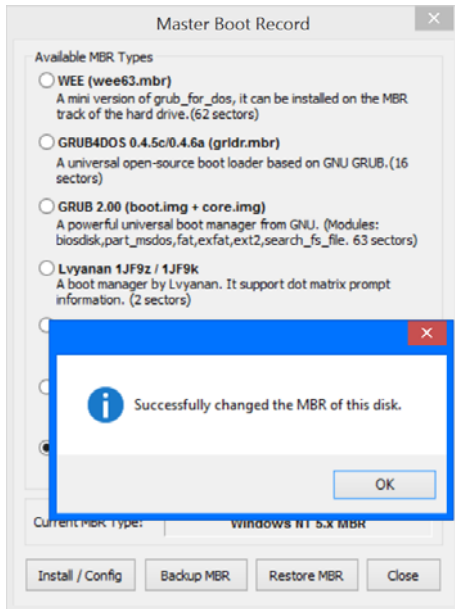
- ▶ Make sure that the "Windows NT 5.x / 6.x MBR" option is selected. If not, choose this option manually
- ▶ Press "Install / Config" button



- ▶ The new "Choose MBR" window will appear
- ▶ Press "Windows NT 6.x MBR" button to begin the process



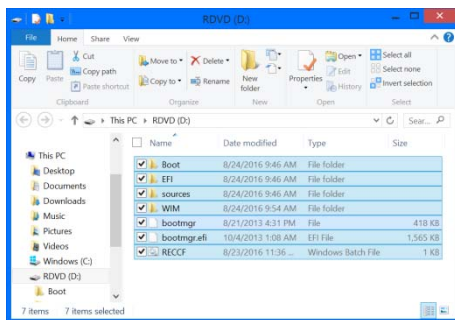
- ▶ A message "Successfully changed the MBR of this disk" will appear after completing the process
- ▶ Press "OK" button to close this message



- ▶ Press "Close" button to close the "Master Boot Record" window
- ▶ Press "Exit" button in the main menu to close the application

Copying installation files

- ▶ Save all folders and files from the custom image to the root of the USB flash drive



Example picture of how a boat stick looks like when it is finished.